



SPECIALTY
FURNITURE

Health Care Furniture Catalogue



“Specialized Furniture for the Health Care Environment”
www.specialtyfurniture.ca



SPECIALTY FURNITURE

Today's health care environment is becoming more complex and demanding. Specialty Furniture's collection of furniture has been specifically designed for this environment and combines superior design and functionality with quality construction and durability. All the pieces in our collection have been carefully selected and tested to meet our exact standards.

"Committed to Service" is Specialty Furniture's promise to our customer. Our service begins at the very beginning of your furniture purchase with helpful and educated representatives who can assist you in selection and design and follows through to the very end with friendly and on time delivery and installation. Specialty Furniture knows that without a true commitment to service we would not be able to deliver a reliable and stress free experience to our customer.



Table of Contents

PRODUCT	PAGE
RESIDENT ROOM – BEDS	3 - 7
RESIDENT ROOM – HEAD & FOOTBOARD/SIDE RAIL CHOICES	8 - 9
RESIDENT ROOM – MATTRESSES	10 - 13
RESIDENT ROOM – CASEGOODS	14 - 18
RESIDENT ROOM – CASEGOOD COLOUR CHOICES & OPTIONS	19 - 20
RESIDENT ROOM – OVERBED TABLES	21 - 21
RESIDENT ROOM – CHAIRS	22 - 24
SEATING – WOOD CHAIRS	25 - 28
SEATING – METAL CHAIRS	29 - 31
SEATING – BISTRO/CAFE CHAIRS	32 - 34
SEATING – LOUNGE CHAIRS	35 - 41
SEATING – LOUNGE GROUPINGS	42 - 52
SEATING – RECLINERS/ROCKERS/GLIDERS/SLEEP CHAIRS	53 - 55
SEATING – OTTOMANS/BENCHES	56 - 57
SEATING – BARIATRIC	58 - 58
SEATING – GLIDE and CASTER OPTIONS	59 - 59
SEATING – UPHOLSTERY OPTIONS	60 - 61
OUTDOOR – SEATING	62 - 65
OUTDOOR – TABLES	66 - 68
OUTDOOR – ACCESSORIES	69 - 70
OUTDOOR – CUSHION & UMBRELLA FABRICS	71 - 73
TABLES – OCCASIONAL TABLES	74 - 77
TABLES – PEDESTAL BASES	78 - 82
TABLES – FOUR LEG BASES	83 - 84
TABLES – SPECIALTY	85 - 85
TABLES – TOP SIZES	86 - 86
TABLES – OPTIONS	87 - 87
TABLES – EDGE and COLOUR CHOICES	88 - 90
ACCESSORIES – BOOKCASES	91 - 91
ACCESSORIES – TV ARMOIRES/STANDS	92 - 93
ACCESSORIES – FIREPLACES	94 - 95
ACCESSORIES – LIGHTING	96 - 97
WOOD FINISHES	98 - 98
SPECIFICATIONS and WARRANTY	99 - 102

1.866.559.5099

www.specialtyfurniture.ca

Beds



Resident Room



JOERNS CARE 100 ELECTRIC BED

The Joerns Care 100 bed is the best low height bed on the market today for the price. The Care 100 bed model offers value and function without compromising resident or caregiver safety by featuring Joerns tubular frame construction, which is designed to provide a sturdier structure for resident safety. The Care 100's low height provides fall safety for residents at risk of falling and the Care 100 also meets all of the latest bed entrapment guidelines. Joerns proven grid system deck surface provides ultimate surface support for the resident, air flow around the mattress system and easy to clean openings. Immobilizing legs keep the bed stable and secure for resident transfers at any height but convert to a mobile version in the low height to allow the bed to be moved easily if required. Other features include ultra quiet DC motors, choice of side rail options, baseboard wall bumper, four corner mattress stops, laminate head and footboards in a choice of shapes and colours and an 8" to 26" travel range. 450lb weight capacity. 3 Year Warranty on Electrical and 15 Years on Steel Frame.

SPECIFICATIONS

OVER-ALL LENGTH - 85.5"

DECK HEIGHT LOW POSITION - 8.75"

DECK SURFACE - 35"x80"

OVER-ALL WIDTH (RAILS UP) - 41"

DECK HEIGHT HIGH POSITION - 26"

ITEM

SPFC10080HR

SPFCFBDCTRL

SPFN353AL

DESCRIPTION

CARE 100 ELECTRIC BED, 80" DECK, HEAD SECTION RAILS

FOOTBOARD CONTROL OPTION for CARE 100 BED

4" BED LENGTH EXTENSION KIT

OPTIONS:



Optional Footboard Control Panel



JOERNS EASY CARE RIL ELECTRIC LOW HEIGHT BED

The new Joerns EasyCare® RIL bed provides best in class quality and features for a variety of your resident care needs while meeting your facility's budgetary concerns. The special Toroidal architecture engineering of the bed's steel frame is up to 30 times stronger than standard angle iron. The EasyCare adjustable low height bed has a proven grid-style sleep surface that provides security for resident positioning, air flow around the mattress system and easy to clean openings. The EasyCare bed is on stable legs at all travel heights and only mobile in the low position for those facilities where great stability is desired at all care heights. Other features include ultra quiet DC motors, baseboard wall bumper, four corner mattress stops, choice of side rail options, laminate head and footboards in a choice of shape and color, and a 7" to 30" travel range. 500lb weight capacity. 4 year warranty on electrical and 15 years on the steel frame.

SPECIFICATIONS

OVER-ALL LENGTH - 85.5" for 80" deck and 82" for 76" deck
 DECK HEIGHT LOW POSITION - 7"
 DECK SURFACE - 35"x80" and 35"x76"

OVER-ALL WIDTH (RAILS UP) - 41"
 DECK HEIGHT HIGH POSITION - 30"

ITEM #

- SPFECRIL76HR
- SPFECRIL80HR
- SPFECRILXW76HR
- SPFECRILXW80HR
- SPFECFBDCTRL
- SPF342AL

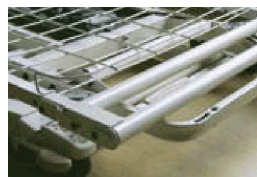
DESCRIPTION

- EASYCARE RIL BED, 76" DECK, HEAD SECTION RAILS
- EASYCARE RIL BED, 80" DECK, HEAD SECTION RAILS
- EASYCARE RIL BED, 76" DECK, 42" EXPANDABLE WIDTH, HEAD SECTION RAILS
- EASYCARE RIL BED, 80" DECK, 42" EXPANDABLE WIDTH, HEAD SECTION RAILS
- FOOTBOARD CONTROL OPTION for EASYCARE BED
- 4" BED LENGTH EXTENDER for EASYCARE BED

OPTIONS:



Optional Footboard Control Panel



Optional 4" Bed Length Extender



Optional 42" Expandable Width

Resident Room

Beds



Resident Room



JOERNS EASY CARE RAH ELECTRIC LOW HEIGHT BED

The new Joerns EasyCare® RAH bed provides best in class quality and features for a variety of your resident care needs while meeting your facility's budgetary concerns. The EasyCare adjustable low height bed has a proven grid-style sleep surface that provides security for resident positioning, air flow around the mattress system and easy to clean openings. The special Toroidal architecture engineering of the bed's steel frame is up to 30 times stronger than standard angle iron. The new UltraLock system is standard and allows the bed to be mobile at any height with an easy operating locking system. Other features include ultra quiet DC motors, baseboard wall bumper, four corner mattress stops, choice of side rail options, laminate head and footboards in a choice of shape and color, 7" to 30" travel range. 500lb weight capacity. 3 year warranty on electrical and 15 years on the steel frame.

SPECIFICATIONS

OVER-ALL LENGTH - 85.5" for 80" deck and 82" for 76" deck
 DECK HEIGHT LOW POSITION - 7"
 DECK SURFACE - 35"x80" and 35"x76"

OVER-ALL WIDTH (RAILS UP) - 41"
 DECK HEIGHT HIGH POSITION - 30"

ITEM

SPFECRAH76HR
 SPFECRAH80HR
 SPFECRAHXW76HR
 SPFECRAHXW80HR
 SPFECFBDCTRL
 SPF342AL

DESCRIPTION

EASYCARE RAH BED, 76" DECK, HEAD SECTION RAILS
 EASYCARE RAH BED, 80" DECK, HEAD SECTION RAILS
 EASYCARE RAH BED, 76" DECK, 42" EXPANDABLE WIDTH, HEAD SECTION RAILS
 EASYCARE RAH BED, 80" DECK, 42" EXPANDABLE WIDTH, HEAD SECTION RAILS
 FOOTBOARD CONTROL OPTION for EASYCARE BED
 4" BED LENGTH EXTENDER for EASYCARE BED

OPTIONS:



Optional Footboard Control Panel



Optional 4" Bed Length Extender



Optional 42" Expandable Width



JOERNS ULTRA CARE XT BARIATRIC 42" WIDE ELECTRIC LOW HEIGHT BED

The revolutionary UltraCare® XT is one bed with the ability to adapt to many resident care environments. Through a remarkable combination of performance, function, and style, the UltraCare XT can be easily transformed to fit any configuration or room. The UltraCare XT adjustable low height bed features the special grid-style sleep surface and Toroidal architecture engineering like on the EasyCare series of beds. The new UltraLock system is standard and allows the bed to be mobile at any height with an easy operating locking system. AdvanceCare positioning allows for Comfort Chair and Trendelenburg positioning for extra comfort and better circulation. Bed width extension kits transform the bed in to a 42" wide bed for heavier care. Other features include ultra quiet DC motors, baseboard wall bumper, four corner mattress stops, choice of side rail options, laminate head and footboards in a choice of shape and color, 7" to 30" travel range. 500lb weight capacity. 3 year warranty on electrical and 15 years on the steel frame.

SPECIFICATIONS:

OVER-ALL LENGTH - 85.5"

DECK HEIGHT LOW POSITION - 7"

DECK SURFACE - 42"x80"

OVER-ALL WIDTH (RAILS UP) - 47"

DECK HEIGHT HIGH POSITION - 30"

ITEM #

SPFUCXT4280HR

DESCRIPTION

ULTRACARE XT BARIATRIC 42" WIDE BED, 80" DECK, HEAD SECTION RAILS



Standard AdvanceCare Positioning



Standard Footboard Control Panel



TRI-FLEX II 1000lb CAPACITY BARIATRIC ELECTRIC BED

The Tri-Flex II 1000lb capacity bed was specifically designed to address bariatric needs of residents weighing up to 1000lbs or needing extra bed width up to 54". The Tri-Flex II beds standard width of 37" can be expanded to 48" or all the way to 54". The bed features Electric Hi-Low, Trendelenberg and Reverse Trendelenberg, Full Head Gatch and Full Knee Gatch positioning. Comes standard with head section rails, head and footboards, CPR release and Battery Back up. Available options are built in digital scale, electric drive system for transporting bed with weight in down the halls, 1000lb capacity foam mattress, foot section rails and 450lb capacity trapeze. The Tri-Flex bed folds to a dimension of 32" wide x 75" high x 47" long so that it can be easily transported through doorways.

SPECIFICATIONS:

DECK PLATFORM - 86" length x 37" width or 48" length x 54" width

OVER-ALL - 94" length x 41" width or 50" length x 63" width

ITEM

SPF63398B

SPF63187

SPF63410

SPF63151

SPF63200

SPF63296B

SPF63153B

DESCRIPTION

TRI-FLEX BED w/ HEAD RAILS, BOARDS, BATTERY BACK UP

TRI-FLEX PRESSURE REDUCING MATTRESS 37" TO 48" WIDTH

TRI-FLEX PRESSURE REDUCING MATTRESS 37" TO 54" WIDTH

DIGITAL SCALE OPTION

IMPULSE WHEEL DRIVE SYSTEM

TRAPEZE KIT FOUR CORNER

FOOT SECTION RAILS, ROLL OUT

Head & Footboard / Siderail Choices



Resident Room

STANDARD LAMINATE BOARDS



Avalon



Classical



Traditional

All beds come with the standard laminate boards as pictured. Three different shapes are available (Avalon, Traditional, and Classical). The boards feature easy to clean laminate surfaces, pvc t-mold edging and a variety of colours to choose from.

OPTIONAL WOOD VENEER BOARDS

Upgrade any of the beds to a more elegant and homelike feel with the different wood veneer boards available. All boards are stained to match any of the standard laminates listed and finished with a high end lacquer to protect the product for years to come

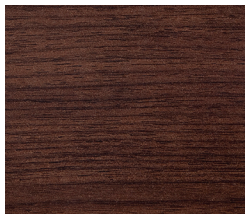


Amherst Wood Veneer
SPFAMWVBD

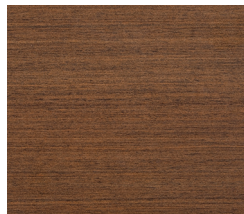


Classics Wood Veneer
SPFCLVBD

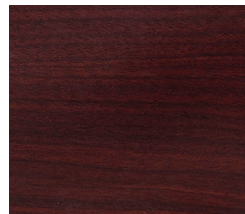
STANDARD LAMINATE COLOUR CHOICES



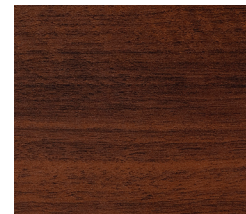
Bayou Walnut



Chestnut



Cordovan Mahogany



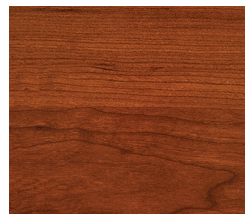
Warm Walnut



Millwork Cherry



Natural Maple



Spiced Cherry



Quartered Oak

Note: Colours shown are limited by printing capabilities. Actual laminate may vary slightly. Contact your sales representative for an actual laminate sample if an exact colour is needed

1.866.559.5099

www.specialtyfurniture.ca



Siderail Choices

Resident Room



HEAD SECTION RAILS (STANDARD)

These rails connect to the head section main frame of the bed and move up and down with the head section whenever it is gatched so they provide safety support at every angle. Top of rail is covered with a vinyl cap for protection against the metal rail. Meets all CSA/FDA bedrail entrapment guidelines.



SOFTCARE SIDE RAILS (OPTIONAL)

Our SoftCare rail has a rubberized coating covering the metal parts of the rail for comfort and protection. Similar to our head section rails, these rails connect to the head section of the bed and move up & down whenever it is gatched. Meets all CSA/FDA bedrail entrapment guidelines.



EXTENDED SIDE RAILS (OPTIONAL)

Revolving rails provide extra protection for residents who need it but also provide a small opening at the foot end of the bed for the resident to get in and out of the bed if needed. Rail features a comfortable vinyl cap for resident protection against the metal rail. Meets all CSA/FDA bedrail entrapment guidelines.



← Ultra
 ← Elite
 ← Deluxe
 ← Prevamatt

PREVAMATT DELUXE FOAM SUPPORT MATTRESS

The PrevaMatt Deluxe features Visco Memory foam in the slope heel section and die cut high density foam in the torso and head sections. Incorporates a sloped heel section to redistribute pressure in the delicate heel and lower leg area. Firm perimeter foam provides added stability during resident transfer and helps resident safety by preventing entrapment between mattress and rails. Strategically located cuts in mattress base promotes easier flexing during bed frame articulation which reduces wear and tear on mattress/cover and prolongs mattress life. Easy to clean cover comes standard in 70-denier nylon or an optional four way stretch material. Available with optional built up side bolsters. Designed for moderate to high risk patients. All mattresses are flame and fire retardant and meets or exceeds the new CAN/ULC-S137 standard.

SPECIFICATIONS

OVER-ALL LENGTH - 76", 80" or 84"
 THICKNESS - 6" (8" with Side Bolsters)
 WARRANTY - 15 Years

OVER-ALL WIDTH - 36"
 WEIGHT CAPACITY - 500lbs

ITEM

SPFPREVADX76
 SPFPREVADX80
 SPFPREVADX84
 SPFPREVADX76SB
 SPFPREVADX80SB
 SPFPREVADX84SB

DESCRIPTION

PREVAMATT DELUXE SUPPORT SURFACE, NYLON COVER, 76"
 PREVAMATT DELUXE SUPPORT SURFACE, NYLON COVER, 80"
 PREVAMATT DELUXE SUPPORT SURFACE, NYLON COVER, 84"
 PREVAMATT DELUXE SUPPORT SURFACE w/SIDE BOLSTERS, NYLON COVER, 76"
 PREVAMATT DELUXE SUPPORT SURFACE w/SIDE BOLSTERS, NYLON COVER, 80"
 PREVAMATT DELUXE SUPPORT SURFACE w/SIDE BOLSTERS, NYLON COVER, 84"

Mattresses



← Ultra
← Elite
← Deluxe
← Prevamatt

PREVAMATT ELITE FOAM SUPPORT MATTRESS

The PrevaMatt Elite features a full Visco Memory foam topper with cross cut technology to provide superior pressure relief. Incorporates a sloped heel section to redistribute pressure in the delicate heel and lower leg area. Firm perimeter foam provides added stability during resident transfer and helps resident safety by preventing entrapment between mattress and rails. Strategically located cuts in mattress base promotes easier flexing during bed frame articulation which reduces wear and tear on mattress/cover and prolongs mattress life. Easy to clean cover comes standard in 70-denier nylon or an optional four way stretch material. Available with optional built up side bolsters. Designed for moderate to high risk patients. All mattresses are flame and fire retardant and meets or exceeds the new CAN/ULC-S137 standard.

SPECIFICATIONS

OVER-ALL LENGTH - 76", 80" or 84"

THICKNESS - 6" (8" with Side Bolsters)

WARRANTY - 15 Years

OVER-ALL WIDTH - 36"

WEIGHT CAPACITY - 500lbs

ITEM

SPFPREVAEL76

SPFPREVAEL80

SPFPREVAEL84

SPFPREVAEL76SB

SPFPREVAEL80SB

SPFPREVAEL84SB

DESCRIPTION

PREVAMATT ELITE SUPPORT SURFACE, NYLON COVER, 76"

PREVAMATT ELITE SUPPORT SURFACE, NYLON COVER, 80"

PREVAMATT ELITE SUPPORT SURFACE, NYLON COVER, 84"

PREVAMATT ELITE SUPPORT SURFACE w/SIDE BOLSTERS, NYLON COVER, 76"

PREVAMATT ELITE SUPPORT SURFACE w/SIDE BOLSTERS, NYLON COVER, 80"

PREVAMATT ELITE SUPPORT SURFACE w/SIDE BOLSTERS, NYLON COVER, 84"



PREVAMATT ULTRA FOAM SUPPORT MATTRESS

The PrevaMatt Ultra is a dynamic non-powered pressure relieving mattress replacement. Tubular cylinders provide comfort and pressure redistribution. Incorporates a sloped heel section to redistribute pressure in the delicate heel and lower leg area. Firm perimeter foam provides added stability during resident transfer and helps resident safety by preventing entrapment between mattress and rails. Strategically located cuts in mattress base promotes easier flexing during bed frame articulation which reduces wear and tear on mattress/cover and prolongs mattress life. Easy to clean cover comes standard in 70-denier nylon or an optional four way stretch material. Designed for moderate to high risk patients. All mattresses are flame and fire retardant and meets or exceeds the new CAN/ULC-S137 standard.

SPECIFICATIONS:

OVER-ALL LENGTH - 76", 80" or 84"

THICKNESS - 6"

WARRANTY - 5 Years

OVER-ALL WIDTH - 36"

WEIGHT CAPACITY - 400lbs

ITEM

SPFPREVAUL76

SPFPREVAUL80

SPFPREVAUL84

DESCRIPTION

PREVAMATT ULTRA SUPPORT SURFACE, NYLON COVER, 76"

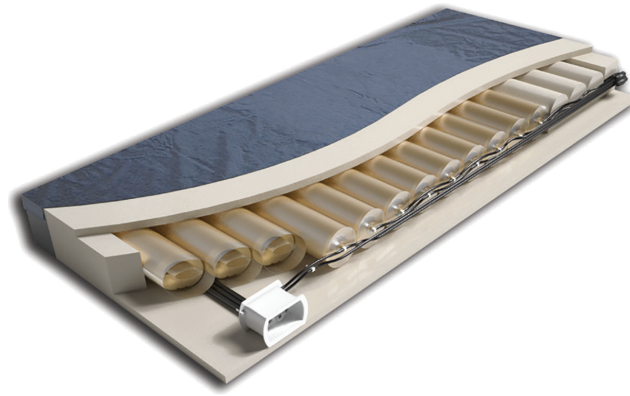
PREVAMATT ULTRA SUPPORT SURFACE, NYLON COVER, 80"

PREVAMATT ULTRA SUPPORT SURFACE, NYLON COVER, 84"

Mattresses



Resident Room



P.R.O. MATT® PLUS CONVERTIBLE AIR FOAM MATTRESS

The P.R.O. Matt® Plus is a non-powered mattress replacement system featuring Pressure Redistribution Optimization (P.R.O.) Technology. With the addition of an optional control unit, the mattress provides powered immersion or alternating pressure therapy, allowing the use of one mattress for both pressure ulcer prevention and treatment. The unique P.R.O. Technology design requires no adjustments or manual inflation. The mattress features a sophisticated internal hosing and valve system that is invisible to the caregiver and patient, but enables the surface to automatically adjust to each patient's weight and body profile. In the non-powered mode, the P.R.O. Matt Plus is indicated for prevention through Stage II pressure ulcers. With the addition of an optional control unit and based on individual patient assessment, the P.R.O. Matt Plus can be used for the treatment of uncomplicated Stage III or IV pressure ulcers. Maximum weight capacity 500lbs. Warranty: Five-years, non-prorated; Cover: One-year.

MATTRESS FEATURES AND BENEFITS:

- Four-zone system (head, shoulder, torso and foot) inner air core reproduces the surface pressure profile of a therapeutic low air loss mattress
- One-inch viscoelastic topper enhances pressure redistribution and patient comfort
- Surrounding firm perimeter provides stability during patient care & Patient safety by eliminating gaps between frames and siderails
- Horizontal air tubes are superior to other manufacturers vertical tubes, as they provide better pressure relief & do not kink if bed is gatched
- Self-calibrating design needs no manual inflation
- Nylon therapy pad is standard, waterproof & is a low friction and low shear surface

SPECIFICATIONS:

	SPFES2 CONTROL UNIT	SPFCBC CONTROL UNIT
DIMENSIONS	7.5"w x 12.25"h x 5.5"d	11.18"w x 5.6"h x 3.5"d
COMFORT SETTINGS	5	10
CYCLE TIMES	5, 10, 15 Minutes	10 Minutes
MODES OF OPERATION	Three - Autofirm, Alternating and Therapy	Two - Alternate and Static
LOCKOUT	Yes	No

ITEM

SPFPROMATT80
SPFES2
SPFCBC

DESCRIPTION

PROMATT PLUS CONVERTIBLE AIR SURFACE 36" x 80"
ES2 CONTROL UNIT
CBC CONTROL UNIT



EMBASSY SERIES CASEGOODS

The streamlined Embassy Collection embodies the elegant style of cool sophistication with the use of crisp, clean lines throughout the body of the case. Sweeping curves in the base and rounded drawer fronts add to the look and capability of the Embassy Collection to suit almost any décor. Vinyl wrap drawer front and top with laminate panel construction. Backs are vented to allow for air circulation within the cabinets. All cabinets come standard with two front glides and two rear casters. Available in a number of different wood finishes and handle options (see colour choice and options section).

ITEM

SPFEMBC1
 SPFEMBC3
 SPFEMD3
 SPFEMD4
 SPFEMDSK
 SPFEMW2D
 SPFEMW2D1D
 SPFEMW2D2D

DESCRIPTION

EMBASSY VINYL WRAP BEDSIDE CABINET, 1 DRW-1DOOR, 21"w x 18"d x 29"h
 EMBASSY VINYL WRAP BEDSIDE CABINET, 3 DRW, 21"w x 18"d x 29"h
 EMBASSY VINYL WRAP DRESSER, 3 DRW, 28"w x 18"d x 29"h
 EMBASSY VINYL WRAP DRESSER, 4 DRW, 28"w x 18"d x 37"h
 EMBASSY VINYL WRAP DESK, 3 DRW/OPEN SPACE, 48"w x 18"d x 29"h
 EMBASSY VINYL WRAP WARDROBE, 2 DOOR, 38"w x 25"d x 78"h
 EMBASSY VINYL WRAP WARDROBE, 2 DOOR 1 DRW, 38"w x 25"d x 78"h
 EMBASSY VINYL WRAP WARDROBE, 2 DOOR 2 DRW, 38"w x 25"d x 78"h

Casegoods



SHAKER SERIES CASEGOODS

Our Shaker Series uses vinyl wrap construction to create a furniture line that closely resembles real wood but is durable and easy to clean. Shaker paneling on door and drawer fronts and detailed edges, imitate the elegance of real wood cabinetry. Our vinyl wrap construction uses a unique thermal fusion process to ensure durability in the long-term care environment. All cabinets come standard with two front glides and two rear casters to make the cabinets easy to level and to manoeuvre. Backs are vented to allow for air circulation within the cabinets. Available in a number of different wood finishes and handle options [see colour choice and options section].

ITEM

SPFSKBC1

SPFSKBC3

SPFSKD3

SPFSKD4

SPFSKDSK

SPFSKW2D

SPFSKW2D1D

SPFSKW2D2D

DESCRIPTION

SHAKER VINYL WRAP BEDSIDE CABINET, 1 DRW-1DOOR, 21"w x 18"d x 29"h

SHAKER VINYL WRAP BEDSIDE CABINET, 3 DRW, 21"w x 18"d x 29"h

SHAKER VINYL WRAP DRESSER, 3 DRW, 28"w x 18"d x 29"h

SHAKER VINYL WRAP DRESSER, 4 DRW, 28"w x 18"d x 37"h

SHAKER VINYL WRAP DESK, 3 DRW/OPEN SPACE, 48"w x 18"d x 29"h

SHAKER VINYL WRAP WARDROBE, 2 DOOR, 38"w x 25"d x 78"h

SHAKER VINYL WRAP WARDROBE, 2 DOOR 1 DRW, 38"w x 25"d x 78"h

SHAKER VINYL WRAP WARDROBE, 2 DOOR 2 DRW, 38"w x 25"d x 78"h





TRADITIONAL SERIES CASEGOODS

Our Traditional Series uses vinyl wrap construction to create a furniture line that closely resembles real wood but is durable and easy to clean. Raised paneling on door and drawer fronts and detailed edges, imitate the elegance of real wood cabinetry. Our vinyl wrap construction uses a unique thermal fusion process to ensure durability in the long-term care environment. All cabinets come standard with two front glides and two rear casters to make the cabinets easy to level and to manoeuvre. Backs are vented to allow for air circulation within the cabinets. Available in a number of different wood finishes and handle options [see colour choice and options section].

ITEM

SPFTRDBC1
 SPFTRDBC3
 SPFTRDD3
 SPFTRDD4
 SPFTRDDSK
 SPFTRDW2D
 SPFTRDW2D1D
 SPFTRDW2D2D

DESCRIPTION

TRADITIONAL VINYL WRAP BEDSIDE CABINET, 1 DRW-1DOOR, 21"w x 18"d x 29"h
 TRADITIONAL VINYL WRAP BEDSIDE CABINET, 3 DRW, 21"w x 18"d x 29"h
 TRADITIONAL VINYL WRAP DRESSER, 3 DRW, 28"w x 18"d x 29"h
 TRADITIONAL VINYL WRAP DRESSER, 4 DRW, 28"w x 18"d x 37"h
 TRADITIONAL VINYL WRAP DESK, 3 DRW/OPEN SPACE, 48"w x 18"d x 29"h
 TRADITIONAL VINYL WRAP WARDROBE, 2 DOOR, 38"w x 25"d x 78"h
 TRADITIONAL VINYL WRAP WARDROBE, 2 DOOR 1 DRW, 38"w x 25"d x 78"h
 TRADITIONAL VINYL WRAP WARDROBE, 2 DOOR 2 DRW, 38"w x 25"d x 78"h

Casegoods



PRESTIGE SERIES CASEGOODS

The modern Prestige Collection has a lasting design and durability. The metal square tube base not only provides longevity, it adds a brilliant contrast in design. Vinyl wrap drawer front and top with laminate panel construction. Backs are vented to allow for air circulation within the cabinets. Available in a number of different wood finishes and epoxy coating finishes on the metal base.

ITEM

SPFPRBC1

SPFPRBC3

SPFPRD3

SPFPRD4

SPFPRW2D

SPFPRW2D1D

SPFPRW2D2D

DESCRIPTION

PRESTIGE VINYL WRAP BEDSIDE CABINET, 1 DRW-1DOOR, 20"w x 20"d x 30"h

PRESTIGE VINYL WRAP BEDSIDE CABINET, 3 DRW, 20"w x 20"d x 30"h

PRESTIGE VINYL WRAP DRESSER, 3 DRW, 32"w x 18"d x 27"h

PRESTIGE VINYL WRAP DRESSER, 4 DRW, 32"w x 18"d x 35"h

PRESTIGE VINYL WRAP WARDROBE, 2 DOOR, 37"w x 26"d x 72"h

PRESTIGE VINYL WRAP WARDROBE, 2 DOOR 1DRW, 37"w x 26"d x 72"h

PRESTIGE VINYL WRAP WARDROBE, 2 DOOR 2 DRW, 37"w x 26"d x 72"h





HAMPTON SERIES CASEGOODS

The Hampton series features four solid wood legs with a laminate top and wood veneer side panels and drawer fronts. All drawers are on roller glides and feature vinyl box construction. Backs are vented to allow for air circulation within the cabinets. A variety of different handles and knobs are available to choose from.

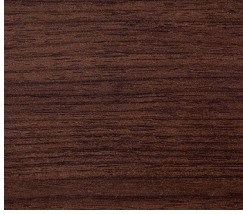
ITEM #	DESCRIPTION
SPFHMBC1	HAMPTON BEDSIDE CABINET, 1 DRW-1DOOR, 22"w x 19"d x 30"h
SPFHMBC3	HAMPTON BEDSIDE CABINET, 3 DRW, 22"w x 19"d x 29"h
SPFHMD3	HAMPTON DRESSER, 3 DRW, 30"w x 20"d x 30"h
SPFHMD4	HAMPTON DRESSER, 4 DRW, 30"w x 20"d x 37"h
SPFHMW2D	HAMPTON WARDROBE, 2 DOOR, 40"w x 25"d x 78"h
SPFHMW2D1D	HAMPTON WARDROBE, 2 DOOR 1 DRW, 40"w x 25"d x 78"h
SPFHMW2D2D	HAMPTON WARDROBE, 2 DOOR 2 DRW, 40"w x 25"d x 78"h

Casegood Options



Resident Room

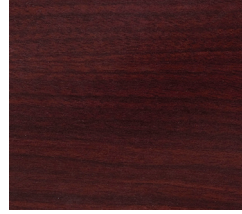
STANDARD COLOUR WOOD GRAIN CHOICES FOR CASEGOODS



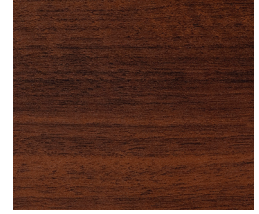
Bayou Walnut



Chestnut



Cordovan Mahogany



Warm Walnut



Millwork Cherry



Natural Maple



Spiced Cherry



Oak

Note: Custom colours are available for all cabinets but have a minimum order level. Contact your sales representative for details and minimum levels needed.

Colours shown are limited by printing capabilities. Actual laminate may vary slightly. Contact your sales representative for an actual laminate sample if an exact colour is needed.



STANDARD HANDLE CHOICES FOR CASEGOODS

All handles are available in nickel finish or brass finish.



D Pull



Transitional Pull



Bail Pull



Crescent Pull



Metal Knob

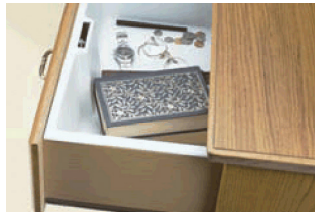


Bin Pull

CASEGOOD OPTIONS



Lock Option
SPFLOCK



Bedside Drawer Insert Option
SPFDRWINSERT



Pull out Shelf Option
SPFPOS
(Only available on the Shaker & Traditional series)



Hutch Option
SPFHUTCH

Overbed Tables



STANDARD OVERBED TABLE

Frame is available in brown epoxy (shown) or light beige epoxy. Please specify at time of ordering which colour choice.

ITEM #	DESCRIPTION
SPFOBTW	OVERBED TABLE, STANDARD, WALNUT TOP
SPFOBTNO	OVERBED TABLE, STANDARD, NATURAL OAK TOP
SPFOBTNM	OVERBED TABLE, STANDARD, NATURAL MAPLE TOP
SPFOBTMH	OVERBED TABLE, STANDARD, MAHOGANY TOP
SPFOBTCH	OVERBED TABLE, STANDARD, AMBER CHERRY TOP



SUPER DUTY OVERBED TABLE

A more "bulked" up version of the standard overbed table. Supports up to 100lbs. Laminate top overbed table adjusts from 30" to 45" in height. Chrome U base with swivel nylon casters.

ITEM #	DESCRIPTION
SPFOBTSDW	OVERBED TABLE, SUPER DUTY, WALNUT TOP
SPFOBTSDNO	OVERBED TABLE, SUPER DUTY, NATURAL OAK TOP
SPFOBTSDNM	OVERBED TABLE, SUPER DUTY, NATURAL MAPLE TOP
SPFOBTSDMH	OVERBED TABLE, SUPER DUTY, MAHOGANY TOP
SPFOBTSDCH	OVERBED TABLE, SUPER DUTY, AMBER CHERRY TOP



OVERBED TABLE, CAST ALUMINUM BASE

Deluxe cast aluminum heavy duty base overbed table. Supports up to 100lbs. Laminate top with bullnose PVC edging. Adjusts from 29" to 46" with ease at the touch of the release handle.

ITEM #	DESCRIPTION
SPF5125MW	OVERBED TABLE, CAST BASE, WALNUT TOP
SPF5125SO	OVERBED TABLE, CAST BASE, NATURAL OAK TOP
SPF5125KM	OVERBED TABLE, CAST BASE, NATURAL MAPLE TOP
SPF5125AW	OVERBED TABLE, CAST BASE, MAHOGANY TOP
SPF5125AC	OVERBED TABLE, CAST BASE, AMBER CHERRY TOP



TUSCAN RESIDENT ROOM CHAIR

Solid wood frame with wrap around full upholstery on seat and back.

ITEM #	DESCRIPTION	YARDAGE
SPFTUSCAN	HIGH BACK CHAIR 24"w x 26"d x 41"h x 19"sh	Yrd-2.5



FLORENCE FLEX BACK RESIDENT ROOM CHAIR

High back is attached to frame by a strong, flexible metal which provides a slight flex motion to the back for comfort. Available in a high back (Shown) or low back version.

ITEM #	DESCRIPTION	YARDAGE
SPFFLORENCE	FLEX BACK CHAIR, High Back 24"w x 26"d x 42"h x 19"sh	Yrd-2



NAPLES RESIDENT ROOM CHAIR

High back chair is available with a full wrap upholstered seat and back (shown) or a wood show frame seat and back.

ITEM #	DESCRIPTION	YARDAGE
SPFNAPLES	HIGH BACK CHAIR, SHOWFRAME 24"w x 25.5"d x 39"h x 19"sh	Yrd-1.5
SPFNAPLESUPH	HIGH BACK CHAIR, FULL UPHOL. 25"w x 26"d x 39.5"h x 19"sh	Yrd-2.5





Resident Room Chairs



DRAKE RESIDENT ROOM CHAIR

High back chair is available with a full wrap upholstered seat and back or a wood show frame (shown) seat and back.

ITEM #	DESCRIPTION	YARDAGE
SPFDRAKE	HIGH BACK CHAIR 24"w x 25"d x 41"h x 19"sh	Yrd-2.5
SPFDRAKEUPH	HIGH BACK CHAIR 26"w x 25"d x 41"h x 19"sh	Yrd-2.5



ROMA RESIDENT ROOM CHAIR

Solid wood frame chair available with high back or low back and web support seating. High back is available with a fixed back or flex back.

ITEM #	DESCRIPTION	YARDAGE
SPFROMAHB	HIGH BACK CHAIR, Fixed Back 24"w x 26"d x 40"h x 19"sh	Yrd-2.5
SPFROMAFB	HIGH BACK CHAIR, Flex Back 24"w x 26"d x 40"h x 19"sh	Yrd-2.5
SPFROMA	LOW BACK CHAIR 24"w x 26"d x 34"h x 19"sh	Yrd-2.0



ANTHONY RESIDENT ROOM CHAIR

High back chair with exposed wood front legs and clean out between seat and back. Available in a 36" high back or a 42" tall back design.

ITEM #	DESCRIPTION	YARDAGE
SPFANTHONY	HIGH BACK CHAIR 26"w x 24"d x 36"h x 19"sh	Yrd-2.75
SPFANTHONYTB	TALL BACK CHAIR 26"w x 24"d x 42"h x 19"sh	Yrd-3

Resident Room Chairs



Resident Room

LEGEND RESIDENT ROOM CHAIR

High back chair with fully upholstered frame. Seat is fixed in place with a small clean out between the seat and the back.

ITEM #	DESCRIPTION	YARDAGE
SPFLEGEND	HIGH BACK CHAIR 29"w x 27"d x 38"h x 19"sh	Yrd-4



QUEEN ANNE RESIDENT ROOM CHAIR

High back chair with traditional arms and Queen Anne legs.

ITEM #	DESCRIPTION	YARDAGE
SPF1086	HIGH BACK CHAIR 30"w x 27.5"d x 40"h x 19"sh	Yrd-3



CHIPPENDALE RESIDENT ROOM CHAIR

High back chair with traditional arms and Chippendale legs.

ITEM #	DESCRIPTION	YARDAGE
SPF1187	HIGH BACK CHAIR 29"w x 27.5"d x 40.5"h x 19"sh	Yrd-3





Wood Chairs

Seating



TRENTON WOOD ARM CHAIR

ITEM #	DESCRIPTION	YARDAGE
SPFTRENTON	WOOD ARM CHAIR 23"w x 24"d x 35"h x 19"sh	Yrd-1
SPFTRENTONC	WOOD ARM CHAIR, 2 FRONT CASTERS 23"w x 24"d x 35"h x 19"sh	Yrd-1



BRANT WOOD ARM CHAIR

ITEM #	DESCRIPTION	YARDAGE
SPFBRANT	WOOD ARM CHAIR 24.5"w x 24"d x 39"h x 19"sh	Yrd-1
SPFBRANTC	WOOD ARM CHAIR, 2 FRONT CASTERS 24.5"w x 24"d x 39"h x 19"sh	Yrd-1



BRANT ROUND BACK WOOD ARM CHAIR

ITEM #	DESCRIPTION	YARDAGE
SPFBRANTRB	WOOD ARM CHAIR 24.5"w x 24"d x 39"h x 19"sh	Yrd-1
SPFBRANTRBC	WOOD ARM CHAIR, 2 FRONT CASTERS 24.5"w x 24"d x 39"h x 19"sh	Yrd-1



HERITAGE WOOD ARM CHAIR

ITEM #	DESCRIPTION	YARDAGE
SPFHERITAGE	WOOD ARM CHAIR 24"w x 24.5"d x 35"h x 19"sh	Yrd-1.25



BOSTON WOOD ARM CHAIR

ITEM #	DESCRIPTION	YARDAGE
SPFBOSTON	WOOD ARM CHAIR 24"w x 22.5"d x 36"h x 19"sh	Yrd-1
SPFBOSTONC	WOOD ARM CHAIR, 2 FRONT CASTERS 24"w x 22.5"d x 36"h x 19"sh	Yrd-1



CAPRI WOOD ARM CHAIR

Chair is available with an upholstered back as shown or with open wood frame back with the decorative wood showing.

ITEM #	DESCRIPTION	YARDAGE
SPFCAPRI	CAPRI CHAIR, OPEN BACK 22.5"w x 23.5"d x 37"h x 19"sh	Yrd-0.5
SPFCAPRIUSB	CAPRI CHAIR, UPHOL BACK 22.5"w x 23.5"d x 37"h x 19"sh	Yrd-1
SPFCAPRIC	CAPRI CHAIR, OPEN BACK, CASTERS 22.5"w x 23.5"d x 37"h x 19"sh	Yrd-0.5
SPFCAPRICUSB	CAPRI CHAIR, UPHOL BACK, CASTERS 22.5"w x 23.5"d x 37"h x 19"sh	Yrd-1



Wood Chairs

Seating



REGENCY WOOD CHAIR

ITEM #	DESCRIPTION	YARDAGE
SPFREGENCY	WOOD ARM CHAIR 23.5"w x 24"d x 40.5"h x 19.5"sh	Yrd-1
SPFREGENCYC	WOOD ARM CHAIR, 2 FRONT CASTERS 23.5"w x 24"d x 40.5"h x 19.5"sh	Yrd-1
SPFREGENCYCS	WOOD SIDE CHAIR 23.5"w x 24"d x 40.5"h x 19.5"sh	Yrd-1



ROYALE WOOD CHAIR

Same size and look as our Regency chair except with a show wood back insert for added detail.

ITEM #	DESCRIPTION	YARDAGE
SPFROYALE	WOOD ARM CHAIR, WOOD BACK 23.5"w x 24"d x 40.5"h x 19.5"sh	Yrd-1
SPFROYALEC	WOOD ARM CHAIR, WOOD BACK, CASTERS 23.5"w x 24"d x 40.5"h x 19.5"sh	Yrd-1



PALERMO WOOD ARM CHAIR

ITEM #	DESCRIPTION	YARDAGE
SPFPALERMO	WOOD ARM CHAIR 23"w x 24"d x 35"h x 19"sh	Yrd-1
SPFPALERMOC	WOOD ARM CHAIR, 2 FRONT CASTERS 23"w x 24"d x 35"h x 19"sh	Yrd-1



AUTUMN WOOD ARM CHAIR

ITEM #	DESCRIPTION	YARDAGE
SPFAUTUMN	WOOD ARM CHAIR 24"w x 25"d x 37"h x 19"sh	Yrd-1
SPFAUTUMNC	WOOD ARM CHAIR, 2 FRONT CASTERS 24"w x 25"d x 37"h x 19"sh	Yrd-1



JACKSON STACKING WOOD ARM CHAIR

Stacks 3 High

ITEM #	DESCRIPTION	YARDAGE
SPFJACKSON	CHAIR, UPHOL SEAT & BACK 23"w x 21"d x 33"h x 18"sh	Yrd-1
SPFJACKSONWB	CHAIR, UPHOL SEAT & WOOD BACK 23"w x 21"d x 33"h x 18"sh	Yrd-0.5
SPFJACKSONWSB	CHAIR, WOOD SEAT & BACK 23"w x 21"d x 33"h x 18"sh	Yrd-0.0



DOUGLASS STACKING WOOD ARM CHAIR

Stacks 4 High

ITEM #	DESCRIPTION	YARDAGE
SPFDOUGLASS	STACKING WOOD ARM CHAIR 22"w x 19"d x 34.5"h x 19"sh	Yrd-1



VENUS STACKING ARM CHAIR

Stacks 3 High

ITEM #	DESCRIPTION	YARDAGE
SPFVENUS	STACKING ARM CHAIR 22.5"w x 19.5"d x 33.5"h x 19"sh	Yrd-1



Seating

Metal Chairs

Seating



JUPITER ARM CHAIR

Frame is available in all our standard epoxy colours.

ITEM #	DESCRIPTION	YARDAGE
SPFJUPITER	ARM CHAIR 21.5"w x 26"d x 33.5"h x 18"sh	Yrd-1



VANITY ARM CHAIR

ITEM #	DESCRIPTION	YARDAGE
SPFVANITY	ARM CHAIR 24"w x 21.25"d x 33"h x 18.5"sh	Yrd-1



MOON ROUND BACK ARM CHAIR

Stylish metal frame chair is available with various padded or wooden seat/back options. Frame is available in a chrome finish or a black epoxy finish (custom colours available on quantity)

ITEM #	DESCRIPTION	YARDAGE
SPFMOONPRWS	WOOD SEAT & BACK CHAIR 23.5"w x 22"d x 32.75"h x 18"sh	Yrd-0
SPFMOONPRPS	PADDED SEAT & WOOD BACK CHAIR 23.5"w x 22"d x 32.75"h x 19"sh	Yrd-0.5
SPFMOONPRPSB	PADDED SEAT & BACK CHAIR 23.5"w x 22"d x 32.75"h x 19"sh	Yrd-0.75



MOON ARM CHAIR

Stylish metal frame chair is available with various padded or wooden seat/back options. Frame is available in a chrome finish or a black epoxy finish (custom colours available on quantity)

ITEM #	DESCRIPTION	YARDAGE
SPFMOONPWS	WOOD SEAT & BACK CHAIR 23.5"w x 22"d x 32.75"h x 18"sh	Yrd-0
SPFMOONPPS	PADDED SEAT & WOOD BACK CHAIR 23.5"w x 22"d x 32.75"h x 19"sh	Yrd-0.5
SPFMOONPPSB	PADDED SEAT & BACK CHAIR 23.5"w x 22"d x 32.75"h x 19"sh	Yrd-0.75



MERCURY STACKING ARM CHAIR

Traditional steel frame stacking chair with nylon flared arms. Frame is available in the standard black epoxy finish to match the arms. Stacks 5 high.

ITEM #	DESCRIPTION	YARDAGE
SPFMERCURY	STACKING ARM CHAIR 23"w x 22"d x 32.5"h x 18"sh	Yrd-.75



APOLLO STACKING ARM CHAIR, HIGH BACK

High back version of the Mercury series chair. Stacks 5 high

ITEM #	DESCRIPTION	YARDAGE
SPFAPOLLO	STACKING ARM CHAIR 23"w x 22"d x 35"h x 18"sh	Yrd-1



ZENITH STACKING ARM CHAIR

Durable, high impact polypropylene seat and back. Oval tube steel frame in black epoxy powder coat only. Stacks 10 high. Polypropylene seat and back is available in BLACK, LIGHT GREY, TAUPE, GREEN, BLUE and BURGUNDY.

ITEM #	DESCRIPTION	YARDAGE
SPFZENITH	STACKING ARM CHAIR 21"w x 23"d x 31"h x 17"sh	Yrd-0



Metal Chairs



LOCUST STACKING ARM CHAIR

Attractive and durable, with comfortable compound curved seat, self-skinned urethane arms and steel frame.

ITEM #	DESCRIPTION	YARDAGE
SPFLOCUST	STACKING ARM CHAIR 23"w x 22"d x 32"h x 18"sh	Yrd-1



RUSH STACKING ARM CHAIR

Sled base stacking arm chair with padded seat has a heavy gauge wire frame for durability. Frame is available in chrome finish as shown or any of our standard epoxy colours.

ITEM #	DESCRIPTION	YARDAGE
SPFRUSH	STACKING ARM CHAIR 23"w x 23"d x 31"h x 17.5"sh	Yrd-0.75



ECONOMY STACKING ARM CHAIR

Economical, steel frame stacking chair available with or without arms. Frame is available in a chrome finish or black epoxy. Stacks 10 high.

ITEM #	DESCRIPTION	YARDAGE
SPFXL101	STACKING ARM CHAIR 21"w x 22"d x 33"h x 18"sh	Yrd-0.75
SPFXL100	STACKING SIDE CHAIR 19"w x 22"d x 33"h x 18"sh	Yrd-0.75



ECONOMY STACKING CHAIR

Economical, steel frame stacking chair. Frame is available in a chrome finish, gold epoxy finish or black epoxy finish. Stacks 10 high.

ITEM #	DESCRIPTION	YARDAGE
SPFCAS	STACKING SIDE CHAIR 17"w x 23"d x 36"h x 18"sh	Yrd-0.75



MOON BISTRO/CAFÉ CHAIR

Metal frames are available in a chrome or black epoxy finish.

ITEM #	DESCRIPTION	YARDAGE
SPFMOONWS	WOOD SEAT & BACK CHAIR 19.75"w x 21.75"d x 32.75"h x 18"sh	Yrd-0
SPFMOONPS	PADDED SEAT & WOOD BACK CHAIR 19.75"w x 21.75"d x 32.75"h x 19"sh	Yrd-0.5
SPFMOONPSB	PADDED SEAT & BACK CHAIR 19.75"w x 21.75"d x 32.75"h x 19"sh	Yrd-0.75



MICHELLE BISTRO/CAFÉ CHAIR

Metal frames are available in a chrome or black epoxy finish.

ITEM #	DESCRIPTION	YARDAGE
SPFMICHELLEWS	WOOD SEAT & BACK CHAIR 19"w x 16"d x 32.75"h x 18"sh	Yrd-0
SPFMICHELLEPS	PADDED SEAT & WOOD BACK CHAIR 19"w x 16"d x 32.75"h x 19"sh	Yrd-0.5
SPFMICHELLEPSB	PADDED SEAT & BACK CHAIR 19"w x 16"d x 32.75"h x 19"sh	Yrd-0.75



AMBER BISTRO/CAFÉ CHAIR

Metal frames are available in a chrome or black epoxy finish.

ITEM #	DESCRIPTION	YARDAGE
SPFAMBERWS	WOOD SEAT & BACK CHAIR 17"w x 21"d x 36"h x 18"sh	Yrd-0
SPFAMBERPS	PADDED SEAT & WOOD BACK CHAIR 17"w x 21"d x 36"h x 19"sh	Yrd-0.5
SPFAMBERPSB	PADDED SEAT & BACK CHAIR 17"w x 21"d x 36"h x 19"sh	Yrd-0.75



Bistro / Café Chairs



MANIA BISTRO/CAFÉ CHAIR

Wood frame chair with metal accents and available metal arms.

ITEM #	DESCRIPTION	YARDAGE
SPFMANIAWS	WOOD SEAT & BACK CHAIR 18"w x 20.5"d x 33.75"h x 18"sh	Yrd-0
SPFMANIAPS	PADDED SEAT & WOOD BACK CHAIR 18"w x 20.5"d x 33.75"h x 19"sh	Yrd-0.5
SPFMANIAWS-A	WOOD SEAT & BACK ARM CHAIR 21"w x 20.5"d x 33.75"h x 18"sh	Yrd-0
SPFMANIAPS-A	PADDED SEAT & WOOD BACK ARM CHAIR 21"w x 20.5"d x 33.75"h x 19"sh	Yrd-0.5



TIFFANY BISTRO/CAFÉ CHAIR

Wood frame chair with horizontal wood slat back.

ITEM #	DESCRIPTION	YARDAGE
SPFTIFFANYWS	WOOD SEAT & BACK CHAIR 17.5"w x 17"d x 35"h x 18"sh	Yrd-0
SPFTIFFANYPS	PADDED SEAT & WOOD BACK CHAIR 17.5"w x 17"d x 35"h x 19"sh	Yrd-0.5
SPFTIFFANYPSB	PADDED SEAT & BACK CHAIR 17.5"w x 17"d x 35"h x 19"sh	Yrd-0.75



MEZZADRO BISTRO/CAFÉ CHAIR

Wood frame chair with vertical wood slat back.

ITEM #	DESCRIPTION	YARDAGE
SPFMEZZADROWS	WOOD SEAT & BACK CHAIR 18"w x 17"d x 35"h x 18"sh	Yrd-0
SPFMEZZADROPS	PADDED SEAT & WOOD BACK CHAIR 18"w x 17"d x 35"h x 19"sh	Yrd-0.5



SIL190 BISTRO/CAFÉ CHAIR

Wood frame café chair with vertical wood slat back available with wood seat or padded wood seat.

ITEM #	DESCRIPTION	YARDAGE
SPFSIL190WS	WOOD SEAT CHAIR 19"w x 18"d x 35"h x 18"sh	Yrd-0
SPFSIL190PS	PADDED SEAT CHAIR 19"w x 18"d x 35"h x 19"sh	Yrd-0.5



BRAVA BISTRO/CAFÉ CHAIR

Metal frame chair in black epoxy finish.

ITEM #	DESCRIPTION	YARDAGE
SPFBRAVAWS	WOOD SEAT & METAL BACK CHAIR 16"w x 21"d x 35"h x 18"sh	Yrd-0
SPFBRAVAPS	PADDED SEAT & METAL BACK CHAIR 16"w x 21"d x 35"h x 19"sh	Yrd-0.33
SPFBRAVAPSB	PADDED SEAT & PADDED BACK CHAIR 16"w x 21"d x 35"h x 19"sh	Yrd-0.5



VIENNA BISTRO/CAFÉ CHAIR

Metal frame chair in black epoxy finish.

ITEM #	DESCRIPTION	YARDAGE
SPFVIENNAWS	WOOD SEAT & METAL BACK CHAIR 16"w x 21"d x 35"h x 18"sh	Yrd-0
SPFVIENNAPS	PADDED SEAT & METAL BACK CHAIR 16"w x 21"d x 35"h x 19"sh	Yrd-0.33
SPFVIENNAPSB	PADDED SEAT & PADDED BACK CHAIR 16"w x 21"d x 35"h x 19"sh	Yrd-0.5





Lounge Chairs

Seating



TUSCAN HIGH BACK CHAIR

ITEM #	DESCRIPTION	YARDAGE
SPFTUSCAN	HIGH BACK CHAIR 24"w x 26"d x 41"h x 19"sh	Yrd-2.5



ANTHONY HIGH BACK CHAIR

High back chair with exposed wood front legs and clean out between seat and back.

ITEM #	DESCRIPTION	YARDAGE
SPFANTHONY	ARM CHAIR, HIGH BACK 26"w x 24"d x 36"h x 19"sh	Yrd-2.75



CLEOPATRA CHAIR

Low back chair with exposed wood front legs and clean out between seat and back.

ITEM #	DESCRIPTION	YARDAGE
SPFCLEO	ARM CHAIR 26"w x 24"d x 32"h x 19"sh	Yrd-2.5



ROMA LOUNGE CHAIR

Solid wood frame chair available with high back or low back and web support seating. High back is available with a fixed back or flex back.

ITEM #	DESCRIPTION	YARDAGE
SPFROMAHB	HIGH BACK CHAIR, Fixed Back 24"w x 26"d x 40"h x 19"sh	Yrd-2.5
SPFROMAFB	HIGH BACK CHAIR, Flex Back 24"w x 26"d x 40"h x 19"sh	Yrd-2.5
SPFROMA	LOW BACK CHAIR 24"w x 26"d x 34"h x 19"sh	Yrd-2.0



LEGEND HIGH BACK CHAIR

High back chair with fully upholstered frame. Seat is fixed in place with a clean out between it and the back.

ITEM #	DESCRIPTION	YARDAGE
SPFLEGEND	HIGH BACK CHAIR 29"w x 27"d x 38"h x 19"sh	Yrd-4



GOOSE NECK ARM HIGH BACK CHAIR

High back chair with goose neck arms and ball and claw legs.

ITEM #	DESCRIPTION	YARDAGE
SPF1033	HIGH BACK CHAIR 26"w x 28"d x 42"h x 20"sh	Yrd-3





Lounge Chairs

Seating



QUEEN ANNE OCCASIONAL CHAIR

High back chair with traditional arms and Queen Anne legs.

ITEM #	DESCRIPTION	YARDAGE
SPF1086	HIGH BACK CHAIR 30"w x 27.5"d x 40"h x 19"sh	Yrd-3



CHIPPENDALE OCCASIONAL CHAIR

High back chair with traditional arms and Chippendale legs.

ITEM #	DESCRIPTION	YARDAGE
SPF1187	HIGH BACK CHAIR 29"w x 27.5"d x 40.5"h x 19"sh	Yrd-3



OCCASIONAL ARM CHAIR

Fully upholstered high back chair with wood legs.

ITEM #	DESCRIPTION	YARDAGE
SPF2791	LOUNGE CHAIR 35"w x 35"d x 38"h x 19"sh	Yrd-7



OCCASIONAL ARM CHAIR

Fully upholstered chair with angle block legs.

ITEM #	DESCRIPTION	YARDAGE
SPF2118	LOUNGE CHAIR 34.5"w x 34"d x 35"h x 19"sh	Yrd-5.5



OCCASIONAL ARM CHAIR

Fully upholstered with tapered wood legs.

ITEM #	DESCRIPTION	YARDAGE
SPF2207	LOUNGE CHAIR 22"w x 28"d x 43"h x 19"sh	Yrd-4



OCCASIONAL ARM CHAIR

Fully upholstered with tapered wood legs.

ITEM #	DESCRIPTION	YARDAGE
SPFTRISTAN	LOUNGE CHAIR 30"w x 37"d x 36"h x 19"sh	Yrd-6



Lounge Chairs



OCCASIONAL ARM CHAIR

Fully upholstered chair with tapered block legs.

ITEM #
SPF2755

DESCRIPTION
LOUNGE CHAIR
32"w x 31"d x 33"h x 19"sh

YARDAGE
Yrd-7



OCCASIONAL ARM CHAIR

Fully upholstered chair with tapered block legs.

ITEM #
SPF2408

DESCRIPTION
LOUNGE CHAIR
35"w x 37"d x 36"h x 19"sh

YARDAGE
Yrd-8



OCCASIONAL ARM CHAIR

Fully upholstered chair with tapered wood legs.

ITEM #
SPF2977

DESCRIPTION
LOUNGE CHAIR
26"w x 31"d x 34"h x 18"sh

YARDAGE
Yrd-6



WINGBACK CHAIR

Fully upholstered chair with straight lines and tapered wood legs.

ITEM #	DESCRIPTION	YARDAGE
SPF2877	LOUNGE CHAIR 29"w x 32"d x 42"h x 19"sh	Yrd-5



WINGBACK CHAIR

Fully upholstered chair with Queen Anne or tapered wood legs.

ITEM #	DESCRIPTION	YARDAGE
SPF602	LOUNGE CHAIR, QUEEN ANNE LEGS 30"w x 30"d x 38"h x 19"sh	Yrd-5
SPF603	LOUNGE CHAIR, TAPERED LEGS 30"w x 30"d x 38"h x 19"sh	Yrd-5
SPF602OT	OTTOMAN, QUEEN ANNE 25"w x 22"d x 18"h	Yrd-2
SPF603OT	OTTOMAN, TAPERED LEG 25" w x 22"d x 18"h	Yrd-2



QUEEN ANNE WINGBACK CHAIR

Fully upholstered chair with Queen Anne wood legs.

ITEM #	DESCRIPTION	YARDAGE
SPF6010	LOUNGE CHAIR 33"w x 33"d x 42"h x 19"sh	Yrd-5.5



Lounge Chairs



TUB CHAIR

Fully upholstered with wood block legs.

ITEM #	DESCRIPTION	YARDAGE
SPF2318	LOUNGE CHAIR 28"w x 26"d x 29"h x 19"sh	Yrd-4



SETTEE

Fully upholstered settee with Queen Anne or tapered legs.

ITEM #	DESCRIPTION	YARDAGE
SPF2101	SETTEE, QUEEN ANNE LEGS 54"w x 39"d x 33"h x 18"sh	Yrd-8
SPF2101T	SETTEE, TAPERED LEGS 54"w x 39"d x 33"h x 18"sh	Yrd-8



PARSONS CHAIR

Fully upholstered chair with tapered or Queen Anne wood legs.

ITEM #	DESCRIPTION	YARDAGE
SPF8015	PARSONS CHAIR, TAPERED LEG 20"w x 25"d x 41"h x 19"sh	Yrd-3
SPF8005	PARSONS CHAIR, QUEEN ANNE LEG 21"w x 25"d x 41"h x 19"sh	Yrd-3



FELICIA ARM CHAIR

Fully upholstered chair with tapered wood legs.

ITEM #	DESCRIPTION	YARDAGE
SPFFELICIA	FELICIA ARM CHAIR 24"w x 24"d x 41"h x 19"sh	Yrd-3



KINGSTON LOUNGE FURNITURE

Designed for style and practicality, this series features removeable seats with flow through openings for liquids. Easy to clean and durable.

ITEM #	DESCRIPTION	YARDAGE
SPFKINGSTON	LOUNGE CHAIR 33"w x 36.5"d x 35.5"h x 19"sh	Yrd-7
SPFKINGSTON-LV	LOVE SEAT 68"w x 36"d x 35.5"h x 19"sh	Yrd-12



CHIPPENDALE LOUNGE FURNITURE

Designed for style and practicality, this series features removeable seats with flow through openings for liquids. Easy to clean and durable.

ITEM #	DESCRIPTION	YARDAGE
SPF1130	LOUNGE CHAIR, CHIPPENDALE 32"w x 30"d x 33"h x 20"sh	Yrd-5
SPF1116	WINGBACK CHAIR, CHIPPENDALE 28"w x 28"d x 41"h x 20"sh	Yrd-5
SPF2130	LOVESEAT, CHIPPENDALE 53"w x 31"d x 36"h x 19"sh	Yrd-8



QUEEN ANNE LOUNGE FURNITURE

Designed for style and practicality, this series features removeable seats with flow through openings for liquids. Easy to clean and durable.

ITEM #	DESCRIPTION	YARDAGE
SPF1030	LOUNGE CHAIR, QUEEN ANNE 32"w x 32"d x 33.5"h x 19"sh	Yrd-5
SPF1016	WINGBACK CHAIR, QUEEN ANNE 28.5"w x 30"d x 39"h x 20"sh	Yrd-5
SPF2030	LOVESEAT, QUEEN ANNE 53"w x 31"d x 34"h x 19"sh	Yrd-8





Lounge Groupings



TRILLIUM CHIPPENDALE LEG LOUNGE FURNITURE

This series is designed for use in the Long Term Care environment on care floors with heavier care. All Trillium chairs, loveseats and sofas feature removable seat cushions with a cleanout opening at the back for easy cleaning and incontinent control.

ITEM #	DESCRIPTION	YARDAGE
SPFTRCPWB	Wingback Chair, Chippendale Legs 30"w x 26"d x 42"h x 18"sh	Yrd-5.5
SPFTRCPLC	Lounge Chair, Chippendale Legs 33.5"w x 27.5"d x 35"h x 18"sh	Yrd-5
SPFTRCPLV	Loveseat, Chippendale Legs 58"w x 27.5"d x 35"h x 18"sh	Yrd-7
SPFTRCPS	Sofa, Chippendale Legs 71"w x 27.5"d x 35"h x 18"sh	Yrd-9.5



TRILLIUM TAPERED LEG LOUNGE FURNITURE

This series is designed for use in the Long Term Care environment on care floors with heavier care. All Trillium chairs, loveseats and sofas feature removable seat cushions with a cleanout opening at the back for easy cleaning and incontinent control.

ITEM #	DESCRIPTION	YARDAGE
SPFTRTPWB	Wingback Chair, Tapered Legs 30"w x 26"d x 42"h x 18"sh	Yrd-5.5
SPFTRTPLC	Lounge Chair, Tapered Legs 33.5"w x 27.5"d x 35"h x 18"sh	Yrd-5
SPFTRTPLV	Loveseat, Tapered Legs 58"w x 27.5"d x 35"h x 18"sh	Yrd-7
SPFTRTPS	Sofa, Tapered Legs 71"w x 27.5"d x 35"h x 18"sh	Yrd-9.5



TRILLIUM QUEEN ANNE LEG LOUNGE FURNITURE

This series is designed for use in the Long Term Care environment on care floors with heavier care. All Trillium chairs, loveseats and sofas feature removable seat cushions with a cleanout opening at the back for easy cleaning and incontinent control.

ITEM #	DESCRIPTION	YARDAGE
SPFTRQAWB	Wingback Chair, Queen Anne Legs 30"w x 26"d x 42"h x 18"sh	Yrd-5.5
SPFTRQALC	Lounge Chair, Queen Anne Legs 33.5"w x 27.5"d x 35"h x 18"sh	Yrd-5
SPFTRQALV	Loveseat, Queen Anne Legs 58"w x 27.5"d x 35"h x 18"sh	Yrd-7
SPFTRQAS	Sofa, Queen Anne Legs 71"w x 27.5"d x 35"h x 18"sh	Yrd-9.5



BUTTERFLY SERIES LOUNGE FURNITURE

The Butterfly series features removable seat cushions with a cleanout opening at the back for easy cleaning and incontinent control. Series is designed for use in the Long Term Care environment on care floors with heavier care

ITEM #	DESCRIPTION	YARDAGE
SPFBTFLC	Lounge Chair 34.5"w x 30"d x 36"h x 18"sh	Yrd-5
SPFBTFLV	Loveseat 58"w x 30"d x 36"h x 18"sh	Yrd-7



ANTHONY SERIES

Anthony Series features exposed wood front legs, high back and clean out between seat and back. Available in a high back chair or high back two seater. Series is designed for use in the Long Term Care environment on care floors with heavier care

ITEM #	DESCRIPTION	YARDAGE
SPFANTHONY	HIGH BACK CHAIR 26"w x 24"d x 36"h x 19"sh	Yrd-2.75
SPFANTHONY2S	TWO SEATER, HIGH BACK 48"w x 24"d x 36"h x 19"sh	Yrd-5



CLEOPATRA SERIES

Anthony Series features exposed wood front legs, mid back and clean out between seat and back. Available in a mid back chair or mid back two seater. Series is designed for use in the Long Term Care environment on care floors with heavier care

ITEM #	DESCRIPTION	YARDAGE
SPFCLEO	ARM CHAIR 26"w x 24"d x 32"h x 19"sh	Yrd-2.5
SPFCLEO2S	TWO SEATER 48"w x 24"d x 32"h x 19"sh	Yrd-4.5



Lounge Groupings



CLASSIC SERIES LOUNGE FURNITURE

The Classic series features removable seat cushions with a cleanout opening at the back for easy cleaning and incontinent control. Series is designed for use in the Long Term Care environment on care floors with heavier care

ITEM #	DESCRIPTION	YARDAGE
SPFCLSLC	Lounge Chair with Skirt 40"w x 36"d x 33"h x 19"sh	Yrd-9
SPFCLSLV	Loveseat with Skirt 65"w x 37.5"d x 34.5"h x 19"sh	Yrd-13
SPFCLSS	Sofa with Skirt 88"w x 37.5"d x 34.5"h x 19"sh	Yrd-15



BUN FOOT SERIES LOUNGE FURNITURE

The Bun Foot series features removable seat cushions with a cleanout opening at the back for easy cleaning and incontinent control. Series is designed for use in the Long Term Care environment on care floors with heavier care

ITEM #	DESCRIPTION	YARDAGE
SPFBFLC	Lounge Chair, Bun Foot 40"w x 36"d x 33"h x 19"sh	Yrd-8
SPFBFLV	Loveseat, Bun Foot 65"w x 37.5"d x 34.5"h x 19"sh	Yrd-10
SPFBFS	Sofa, Bun Foot 88"w x 37.5"d x 34.5"h x 19"sh	Yrd-12



FLARED SERIES LOUNGE FURNITURE

The Flared series features removable seat cushions with a cleanout opening at the back for easy cleaning and incontinent control. Series is designed for use in the Long Term Care environment on care floors with heavier care

ITEM #	DESCRIPTION	YARDAGE
SPF2112	Lounge Chair, Flared Arms 40"w x 36"d x 33"h x 19"sh	Yrd-6
SPF3112	Loveseat, Flared Arms 65"w x 37.5"d x 34.5"h x 19"sh	Yrd-8



2634 RESIDENTIAL CARE LOUNGE SEATING

The residential Care line of seating products is available in a number of different styles and configurations. All products feature Healthcare quality foam and are suited for lighter care areas or lobby/entry lounges where incontinence isn't a big concern. Ideal for all Retirement home lounge applications



ITEM #	DESCRIPTION	YARDAGE
SPF2634C	LOUNGE CHAIR 42"w x 39"d x 38"h x 18"sh	Yrd-9
SPF2634L	LOVESEAT 67"w x 39"d x 38"h x 18"sh	Yrd-13
SPF2634	SOFA 88"w x 39"d x 38"h x 18"sh	Yrd-16

2851 RESIDENTIAL CARE LOUNGE SEATING

The residential Care line of seating products is available in a number of different styles and configurations. All products feature Healthcare quality foam and are suited for lighter care areas or lobby/entry lounges where incontinence isn't a big concern. Ideal for all Retirement home lounge applications



ITEM #	DESCRIPTION	YARDAGE
SPF2851C	LOUNGE CHAIR 39"w x 36"d x 36"h x 19"sh	Yrd-7
SPF2851L	LOVESEAT 61"w x 36"d x 36"h x 19"sh	Yrd-11
SPF2851	SOFA 83"w x 36"d x 36"h x 19"sh	Yrd-14

2428 RESIDENTIAL CARE LOUNGE SEATING

The residential Care line of seating products is available in a number of different styles and configurations. All products feature Healthcare quality foam and are suited for lighter care areas or lobby/entry lounges where incontinence isn't a big concern. Ideal for all Retirement home lounge applications



ITEM #	DESCRIPTION	YARDAGE
SPF2428C	LOUNGE CHAIR 35.5"w x 39"d x 37"h x 19.5"sh	Yrd-7
SPF2428L	LOVESEAT 57.5"w x 39"d x 37"h x 19.5"sh	Yrd-11
SPF2428	SOFA 79.5"w x 39"d x 37" x 19.5"sh	Yrd-14



Lounge Groupings



2404 RESIDENTIAL CARE LOUNGE SEATING

The residential Care line of seating products is available in a number of different styles and configurations. All products feature Healthcare quality foam and are suited for lighter care areas or lobby/entry lounges where incontinence isn't a big concern. Ideal for all Retirement home lounge applications

ITEM #	DESCRIPTION	YARDAGE
SPF2404C	LOUNGE CHAIR 38"w x 35"d x 36"h x 19"sh	Yrd-7
SPF2404L	LOVESEAT 61"w x 35"d x 36"h x 19"sh	Yrd-11
SPF2404	SOFA 84"w x 35"d x 36"h x 19"sh	Yrd-14



2398 RESIDENTIAL CARE LOUNGE SEATING

The residential Care line of seating products is available in a number of different styles and configurations. All products feature Healthcare quality foam and are suited for lighter care areas or lobby/entry lounges where incontinence isn't a big concern. Ideal for all Retirement home lounge applications

ITEM #	DESCRIPTION	YARDAGE
SPF2398C	LOUNGE CHAIR 40.5"w x 36.5"d x 37"h x 19.5"sh	Yrd-7
SPF2398L	LOVESEAT 61.5"w x 36.5"d x 37"h x 19.5"sh	Yrd-11
SPF2398	SOFA 82.5"w x 36.5"d x 37"h x 19.5"sh	Yrd-14



2184 RESIDENTIAL CARE LOUNGE SEATING

The residential Care line of seating products is available in a number of different styles and configurations. All products feature Healthcare quality foam and are suited for lighter care areas or lobby/entry lounges where incontinence isn't a big concern. Ideal for all Retirement home lounge applications

ITEM #	DESCRIPTION	YARDAGE
SPF2184C	LOUNGE CHAIR 39"w x 40"d x 36"h x 19"sh	Yrd-7
SPF2184L	LOVESEAT 61"w x 40"d x 36"h x 19"sh	Yrd-11
SPF2184	SOFA 83"w x 40"d x 36"h x 19"sh	Yrd-14



2179 RESIDENTIAL CARE LOUNGE SEATING

The residential Care line of seating products is available in a number of different styles and configurations. All products feature Healthcare quality foam and are suited for lighter care areas or lobby/entry lounges where incontinence isn't a big concern. Ideal for all Retirement home lounge applications



ITEM #	DESCRIPTION	YARDAGE
SPF2179C	LOUNGE CHAIR 40"w x 40"d x 38"h x 19.5"sh	Yrd-7
SPF2179L	LOVESEAT 62"w x 40"d x 38"h x 19.5"sh	Yrd-11
SPF2179	SOFA 84"w x 40"d x 38"h x 19.5"sh	Yrd-14

2855 RESIDENTIAL CARE LOUNGE SEATING

The residential Care line of seating products is available in a number of different styles and configurations. All products feature Healthcare quality foam and are suited for lighter care areas or lobby/entry lounges where incontinence isn't a big concern. Ideal for all Retirement home lounge applications



ITEM #	DESCRIPTION	YARDAGE
SPF2855C	LOUNGE CHAIR 33"w x 38"d x 35.5"h x 18.5"sh	Yrd-7
SPF2855L	LOVESEAT 56"w x 38"d x 35.5"h x 18.5"sh	Yrd-11
SPF2855	SOFA 79"w x 38"d x 35.5"h x 18.5"sh	Yrd-14

2538 RESIDENTIAL CARE LOUNGE SEATING

The residential Care line of seating products is available in a number of different styles and configurations. All products feature Healthcare quality foam and are suited for lighter care areas or lobby/entry lounges where incontinence isn't a big concern. Ideal for all Retirement home lounge applications



ITEM #	DESCRIPTION	YARDAGE
SPF2538C	LOUNGE CHAIR 40"w x 39"d x 40"h x 19"sh	Yrd-6
SPF2538L	LOVESEAT 61"w x 39"d x 40"h x 19"sh	Yrd-11
SPF2538	SOFA 85"w x 39"d x 40"h x 19"sh	Yrd-13.5



Lounge Groupings



2301 RESIDENTIAL CARE LOUNGE SEATING

The residential Care line of seating products is available in a number of different styles and configurations. All products feature Healthcare quality foam and are suited for lighter care areas or lobby/entry lounges where incontinence isn't a big concern. Ideal for all Retirement home lounge applications

ITEM #	DESCRIPTION	YARDAGE
SPF2301C	LOUNGE CHAIR 29"w x 32"d x 32"h x 19"sh	Yrd-6
SPF2301L	LOVESEAT 62"w x 32"d x 32"h x 19"sh	Yrd-9.5
SPF2301	SOFA 76"w x 32"d x 32"h x 19"sh	Yrd-12
SPF2301O	OTTOMAN 26"w x 20"d x 17"h	Yrd-2.5



2213 RESIDENTIAL CARE LOUNGE SEATING

The residential Care line of seating products is available in a number of different styles and configurations. All products feature Healthcare quality foam and are suited for lighter care areas or lobby/entry lounges where incontinence isn't a big concern. Ideal for all Retirement home lounge applications

ITEM #	DESCRIPTION	YARDAGE
SPF2213C	LOUNGE CHAIR 37"w x 38"d x 35"h x 19"sh	Yrd-9
SPF2213L	LOVESEAT 62"w x 38"d x 35"h x 19"sh	Yrd-14
SPF2213	SOFA 82"w x 38"d x 35"h x 19"sh	Yrd-17
SPF2213O	OTTOMAN 27"w x 24"d x 18"h	Yrd-2.5



2068 RESIDENTIAL CARE LOUNGE SEATING

The residential Care line of seating products is available in a number of different styles and configurations. All products feature Healthcare quality foam and are suited for lighter care areas or lobby/entry lounges where incontinence isn't a big concern. Ideal for all Retirement home lounge applications

ITEM #	DESCRIPTION	YARDAGE
SPF2068C	LOUNGE CHAIR 46"w x 38"d x 39"h x 19"sh	Yrd-9
SPF2068L	LOVESEAT 70"w x 38"d x 39"h x 19"sh	Yrd-14
SPF2068	SOFA 84"w x 38"d x 39"h x 19"sh	Yrd-17
SPF2068SB	SOFA BED 84"w x 38"d x 39"h x 19"sh	Yrd-17
SPF2068O	OTTOMAN 32"w x 26"d x 17"h	Yrd-2.5

Lounge Groupings



2585 RESIDENTIAL CARE LOUNGE SEATING

The residential Care line of seating products is available in a number of different styles and configurations. All products feature Healthcare quality foam and are suited for lighter care areas or lobby/entry lounges where incontinence isn't a big concern. Ideal for all Retirement home lounge applications



ITEM #	DESCRIPTION	YARDAGE
SPF2585C	LOUNGE CHAIR 48"w x 38"d x 38"h x 19"sh	Yrd-9
SPF2585L	LOVESEAT 74"w x 38"d x 38"h x 19"sh	Yrd-14.5
SPF2585	SOFA 95"w x 38"d x 38"h x 19"sh	Yrd-16.5
SPF2585O	OTTOMAN 37"w x 29"d x 19"h	

2012 RESIDENTIAL CARE LOUNGE SEATING

The residential Care line of seating products is available in a number of different styles and configurations. All products feature Healthcare quality foam and are suited for lighter care areas or lobby/entry lounges where incontinence isn't a big concern. Ideal for all Retirement home lounge applications



ITEM #	DESCRIPTION	YARDAGE
SPF2012C	LOUNGE CHAIR 30"w x 35"d x 34"h x 19"sh	Yrd-6
SPF2012L	LOVESEAT 60"w x 35"d x 34"h x 19"sh	Yrd-10
SPF2012	SOFA 84"w x 35"d x 37"h x 19"sh	Yrd-12

8352 RESIDENTIAL CARE LOUNGE SEATING

The residential Care line of seating products is available in a number of different styles and configurations. All products feature Healthcare quality foam and are suited for lighter care areas or lobby/entry lounges where incontinence isn't a big concern. Ideal for all Retirement home lounge applications



ITEM #	DESCRIPTION	YARDAGE
SPF8352C	LOUNGE CHAIR 38"w x 36"d x 34"h x 19"sh	Yrd-7.5
SPF8352L	LOVESEAT 61"w x 36"d x 34"h x 19"sh	Yrd-11
SPF8352	SOFA 82"w x 36"d x 34"h x 19"sh	Yrd-14
SPF8352SB	SOFA BED 82"w x 36"d x 34"sh	Yrd-14
SPF8352O	OTTOMAN 25"w x 20"d x 17"sh	Yrd-3

Seatings



Lounge Groupings



2560 RESIDENTIAL CARE LOUNGE SEATING

The residential Care line of seating products is available in a number of different styles and configurations. All products feature Healthcare quality foam and are suited for lighter care areas or lobby/entry lounges where incontinence isn't a big concern. Ideal for all Retirement home lounge applications

ITEM #	DESCRIPTION	YARDAGE
SPF2560C	LOUNGE CHAIR 39"w x 37"d x 36"h x 19"sh	Yrd-8
SPF2560L	LOVESEAT 64"w x 37"d x 36"h x 19"sh	Yrd-11
SPF2560	SOFA 86"w x 37"d x 36"h x 19"sh	Yrd-13.5
SPF2560O	OTTOMAN 31"w x 25"d x 18"h	Yrd-3



2450 RESIDENTIAL CARE LOUNGE SEATING

The residential Care line of seating products is available in a number of different styles and configurations. All products feature Healthcare quality foam and are suited for lighter care areas or lobby/entry lounges where incontinence isn't a big concern. Ideal for all Retirement home lounge applications

ITEM #	DESCRIPTION	YARDAGE
SPF2450C	LOUNGE CHAIR 39"w x 38"d x 39"h x 19"sh	Yrd-6.5
SPF2450L	LOVESEAT 65"w x 38"d x 39"h x 19"sh	Yrd-13
SPF2450	SOFA 86"w x 38"d x 39"h x 19"sh	Yrd-16
SPF2450O	OTTOMAN 26"w x 21"d x 18"h	Yrd-3



2056 RESIDENTIAL CARE LOUNGE SEATING

The residential Care line of seating products is available in a number of different styles and configurations. All products feature Healthcare quality foam and are suited for lighter care areas or lobby/entry lounges where incontinence isn't a big concern. Ideal for all Retirement home lounge applications



ITEM #	DESCRIPTION	YARDAGE
SPF2056C	LOUNGE CHAIR 47"w x 40"d x 39"h x 19"sh	Yrd-10
SPF2056L	LOVESEAT 70"w x 40"d x 39"h x 19"sh	Yrd-16
SPF2056	SOFA 93"w x 40"d x 39"h x 19"sh	Yrd-18
SPF2056O	OTTOMAN 31"w x 26"d x 19"h	Yrd-3.25

2486 RESIDENTIAL CARE LOUNGE SEATING

The residential Care line of seating products is available in a number of different styles and configurations. All products feature Healthcare quality foam and are suited for lighter care areas or lobby/entry lounges where incontinence isn't a big concern. Ideal for all Retirement home lounge applications



ITEM #	DESCRIPTION	YARDAGE
SPF2486C	LOUNGE CHAIR 40"w x 39"d x 40"h x 19"sh	Yrd-8.5
SPF2486L	LOVESEAT 61"w x 39"d x 40"h x 19"sh	Yrd-14
SPF2486	SOFA 85"w x 39"d x 40"h x 19"sh	Yrd-17
SPF2486O	OTTOMAN 32"w x 26"d x 17"h	Yrd-3

Recliners / Rockers / Gliders / Sleep Chairs



Seating



ODEON RECLINERS

This recliner is available in a stationary version or a mobile, 4 locking caster version.

ITEM #	DESCRIPTION	YARDAGE
SPFOD1304	RECLINER, STATIONARY 31.5"w x 36.5"d x 40"h x 18.5"sh	Yrd-5
SPFOD5125	ROCKER/RECLINER, STATIONARY 34.5"w x 36.5"d x 43"h x 18.5"sh	Yrd-5.5
SPFOD5117	RECLINER, MOBILE, 4 LOCKING CASTERS 33.5"w x 38"d x 47"h x 21.5"sh	Yrd-6



QC COLLECTION RECLINERS

This recliner is available in a stationary rocker/recliner version or a mobile, 4 locking caster version.

ITEM #	DESCRIPTION	YARDAGE
SPFGC5125	ROCKER/RECLINER, STATIONARY 34.5"w x 36.5"d x 42"h x 18.5"sh	Yrd-5
SPFGC5117	RECLINER, MOBILE, 4 LOCKING CASTERS 33.5"w x 38"d x 46.5"h x 21.5"sh	Yrd-6.5



REGAL III RECLINER/ROCKER

This recliner is a recliner/rocker all in one.

ITEM #	DESCRIPTION	YARDAGE
SPFRG1305	RECLINER/ROCKER 32.5"w x 37"d x 40.5"h x 19.5"sh	Yrd-7

Recliners / Rockers / Gliders / Sleep Chairs



WINGBACK RECLINER

This recliner is available with Queen Anne legs or Chippendale legs.

ITEM #	DESCRIPTION	YARDAGE
SPF9R916	WINGBACK RECLINER, QUEEN ANNE LEGS 30"w x 34"d x 43"h x 19"sh	Yrd-6
SPF9R915	WINGBACK RECLINER, CHIPPENDALE LEGS 29"w x 34"d x 43"h x 19"sh	Yrd-6



WINGBACK RECLINER

Tapered legs.

ITEM #	DESCRIPTION	YARDAGE
SPF2509	WINGBACK RECLINER 31"w x 33"d x 41"h x 18"sh	Yrd-7



GLIDER/ROCKER CHAIR

Gentle gliding motion on a safe, comfortable seating platform.

ITEM #	DESCRIPTION	YARDAGE
SPF2804	GLIDER/ROCKER CHAIR 32"w x 30"d x 38"h x 19"sh	Yrd-6



Seating

Recliners / Rockers / Gliders / Sleep Chairs



SLEEP CHAIR

This chair folds out and reclines in to a flat bed. Comes standard with four, tapered, wood legs or choose the optional four caster (as pictured) option for easy mobility from room to room. Chair comes standard with black urethane arm caps or you can choose the optional wood arm caps in a variety of finishes. 30" wide sleep platform.

ITEM #	DESCRIPTION	YARDAGE
SPFOD2800	SLEEP CHAIR 36.5"w x 38"d x 36.5"h x 18.5"sh	Yrd-8
SPFWA	WOOD ARM CAPS	
SPF3S	FOUR LOCKING CASTER OPTION	



ELECTRIC LIFT & RECLINE CHAIR

Electric lift and recline chair will gently support and lift the resident to a standing position as well as electrically recline to infinite positions for superior comfort. Chair is a two motor system and of superior quality compared to "import" models. Available with optional heat and massage option. Comes standard in Mocha, Parchment, Blue Ridge, Dusty Jade or Burgundy vinyl. Other vinyl colours and Cryptons available at an upcharge.

ITEM #	DESCRIPTION	YARDAGE
SPFC0552LR	LIFT & RECLINE CHAIR 33.5"w x 35"d x 39"h x 18"sh	Yrd-6
SPFC0552LRHM	LIFT/RECLINE/HEAT/MASSAGE CHAIR 33.5"w x 35"d x 39"h x 18"sh	Yrd-6



TAPERED BLOCK OTTOMAN

ITEM #	DESCRIPTION	YARDAGE
SPF21790	OTTOMAN, TAPERED BLOCK LEGS 28"w x 21"d x 17"h	Yrd-2



FLARED LEG OTTOMAN

ITEM #	DESCRIPTION	YARDAGE
SPF24700	OTTOMAN, FLARED LEGS 24"w x 19"d x 17"h	Yrd-2



TAPERED LEG OTTOMAN

ITEM #	DESCRIPTION	YARDAGE
SPF7610	OTTOMAN, TAPERED LEGS 28"w x 21"d x 18.5"h	Yrd-2



QUEEN ANNE OTTOMAN

ITEM #	DESCRIPTION	YARDAGE
SPF84BW	OTTOMAN, QUEEN ANNE LEGS 24"w x 19"d x 17"h	Yrd-2





Ottomans / Benches

Seating



ROLLED ARM BENCH

Bench is available with tapered legs as shown or with Queen Anne legs.

ITEM #	DESCRIPTION	YARDAGE
SPF2597QA	BENCH, QUEEN ANNE LEGS 52"w x 20"d x 29"h x 18"sh	Yrd-4
SPF2597	BENCH, TAPERED LEGS 52"w x 20"d x 29"h x 18"sh	Yrd-4



ROMAN BENCH

ITEM #	DESCRIPTION	YARDAGE
SPF2597RM	BENCH, FLARED LEGS 52"w x 20"d x 29"h x 18"sh	Yrd-4



BENCH

Bench is available with tapered legs as shown or with Queen Anne legs.

ITEM #	DESCRIPTION	YARDAGE
SPF2598QA	BENCH, QUEEN ANNE LEGS 48"w x 18"d x 18"h	Yrd-3
SPF2598	BENCH, TAPERED LEGS 48"w x 18"d x 18"h	Yrd-3



BARIATRIC RESIDENT ROOM CHAIR

Solid wood chair with an extra wide seat width and weight capacity of 500lbs.

ITEM #	DESCRIPTION	YARDAGE
SPF4177	BARIATRIC RESIDENT ROOM CHAIR 32"w x 30"d x 44"h x 20"sh	Yrd-3.5



BARIATRIC DINING ROOM CHAIR

Solid wood chair with an extra wide seat width and weight capacity of 450lbs.

ITEM #	DESCRIPTION	YARDAGE
SPF1186	BARIATRIC DINING ROOM CHAIR 33"w x 21"d x 33"h x 18"sh	Yrd-3



BARIATRIC LOUNGE CHAIR

Fully upholstered chair with an extra wide seat width and weight capacity of 500lbs.

ITEM #	DESCRIPTION	YARDAGE
SPF4102	BARIATRIC LOUNGE CHAIR 50"w x 37"d x 31"h x 18.5"sh	Yrd-8.5



Glide and Caster Options



NYLON GLIDES

Nylon glides are the standard glide if no glide is specified. They work well on all types of surfaces.



METAL GLIDES

Metal glides are for use on carpeted surfaces only



FELT GLIDES

Felt glides are for use on vinyl or ceramic surfaces and eliminate the vibration noise that occurs when using regular glides. Do not use on carpeted surfaces. Felt does wear out quicker than nylon so the glides do need to be replaced more often.

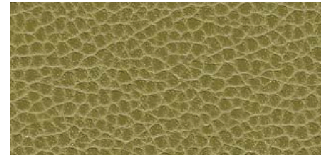


FRONT CASTER OPTION

Casters are available for most wood frame chairs (see seating pages for exact models they are available on.) The casters are installed on the two front legs and regular glides are used on the back legs. Chair is still stable when someone is sitting in it but is a lot easier to move when there is no weight on the legs.

VINYL UPHOLSTERY COVERINGS

A variety of different vinyl upholstery coverings are available to choose from. Vinyl provides ease of cleaning with new “textured” and patterned looks. Choose from major manufacturer’s patterns and colours such as Coral of Chicago, Mor-bern and Momentum. Vinyls meet all flame and fire retardency standards. Contact your sales representative for sample books of available patterns and colours to choose from.



PRINTED CRYPTON UPHOLSTERY COVERINGS

A variety of different patterns and colours are available and printed on to a Crypton base cloth. Crypton’s® patented technology is engineered into the fabric, encapsulating every fibre with stain, odour, and bacteria resistance. The breathable moisture barrier is permanently integrated into the fabric, ensuring a complete and proven performance system from the fibres up. Contact your sales representative for sample books of available patterns and colours to choose from



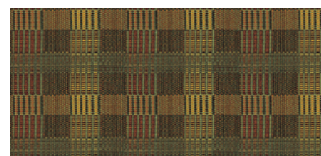
WOVEN CRYPTON UPHOLSTERY COVERINGS

A wide variety of woven textile patterns and colours are available in two different grade/price levels. Crypton’s® patented technology is engineered into the fabric, encapsulating every fibre with stain, odour, and bacteria resistance. The breathable moisture barrier is permanently integrated into the fabric, ensuring a complete and proven performance system from the fibres up. Choose from major manufacturer’s patterns and colours such as Coral of Chicago, Robert Allen and Momentum. Woven Cryptons meet all flame and fire retardency standards. Contact your sales representative for sample books of available patterns and colours to choose from.



STANDARD FABRIC UPHOLSTERY COVERINGS

For those areas where extra barrier protection is not needed we have a variety of standard fabric textiles available in a variety of price ranges and in printed or woven construction. Choose from major manufacturer’s patterns and colours such as Coral of Chicago, Robert Allen and Momentum. Woven Cryptons meet all flame and fire retardency standards. Contact your sales representative for sample books of available patterns and colours to choose from.



Upholstery Suppliers



Printed Cryptons, Woven Cryptons (Grade 1), Vinyls, Fabrics
www.coralfabrics.com



Printed Cryptons, Woven Cryptons (Grade 1), Vinyls, Fabrics
www.themomgroup.com/momtex.html



Printed Cryptons, Woven Cryptons (Grade 1), Vinyls, Fabrics
www.robertalldesign.com/contract



Crown Woven Cryptons (Grade 2), Fabrics
www.duraleecontract.com



Woven Cryptons (Grade 2), Fabrics
www.arc-com.com



Mor-Care Vinyls
www.morbern.com



Woven Cryptons (Grade 2), Fabrics
www.jennisfabrics.com



Printed Cryptons, Woven Cryptons (Grade 2), Fabrics
www.maharam.com



ADIRONDACK CHAIR & OTTOMAN

The Adirondack chair is comfortable, durable and beautiful. High Back Chair has a little spring to the back for a slightly cushier feel. The mortice and tenon joinery can be assembled / disassembled without tools or hardware. No painting - no rust - no rot. Cushions are available in a variety of Sunbrella® fabrics. Limited 10 year warranty against structural failure and is further warranted not to rot, split, crack or peel during this period.

SOLID CONSTRUCTION

The strength of our furniture is ensured by the use of solid construction and sophisticated engineered resin- Andure®. Our furniture is made from solid blocks of 3/8", 3/4" or 1 1/8" Andure® resin with titanium alloy.

UV EXPOSURE

Ultraviolet light takes its name from its ultra long wavelength. It is this wavelength that can penetrate and break the polymer chain causing the material to become brittle and chalky. Studies show that an unusually efficient light-absorbing molecule called HALS is effective to protect Andure's® long chain molecular structure from UV deterioration and thereby ensure the long life of our outdoor furniture.

SUN SHIELD

Common resin will fail as a result of the constant penetration of solar radiation. We fight the sun's fire with another fire - rutile - which is titanium ore. Rutile is alloyed with our co-polymer to become Andure® and reflects damaging solar radiation by redirecting it into a harmless pattern.

When we alloy rutile titanium ore with resin, we capture the benefits of this remarkable crystal.

ITEM

SPFADC-{COLOUR}

DESCRIPTION

ADIRONDACK CHAIR

31"w x 39"d x 41"h x 14"sh

SPFPCADCB-{COLOUR}

BACK CUSHION FOR ADIRONDACK CHAIR

SPFPCADCS-{COLOUR}

SEAT CUSHION FOR ADIRONDACK CHAIR

SPFPCADC-SET-{COLOUR}

CUSHION SET (BACK & SEAT) FOR ADIRONDACK CHAIR

SPFADCOT-{COLOUR}

OTTOMAN FOR ADIRONDACK CHAIR

24.25"w x 18"d x 14"h

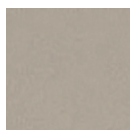
FRAME COLOURS (Add the colour code to the end of the code number)



White - W



Khaki - K



Pebble - P



Outdoor Seating



ANDUREFLEX® STACKING CHAIRS

The AndureFlex® stacking arm and side chairs have seats and backs of comfortable resilient parallel bars, thus the name AndureFlex®. The arm chair has a flat gracefully curved arm to contribute to a crisp look. A hidden stainless steel core and bolt reinforce the joint of the seat and back legs. This product is shipped fully assembled. Frame comes in your choice of White, Khaki or Pebble. Cushions are available in a variety of Sunbrella® fabrics. Limited 10 year warranty against structural failure and is further warranted not to rot, split, crack or peel during this period.

SOLID CONSTRUCTION

The strength of our furniture is ensured by the use of solid construction and sophisticated engineered resin- Andure®. Our furniture is made from solid blocks of 3/8", 3/4" or 1 1/8" Andure® resin with titanium alloy.

UV EXPOSURE

Ultraviolet light takes its name from its ultra long wavelength. It is this wavelength that can penetrate and break the polymer chain causing the material to become brittle and chalky. Studies show that an unusually efficient light-absorbing molecule called HALS is effective to protect Andure's® long chain molecular structure from UV deterioration and thereby ensure the long life of our outdoor furniture.

SUN SHIELD

Common resin will fail as a result of the constant penetration of solar radiation. We fight the sun's fire with another fire - rutile - which is titanium ore. Rutile is alloyed with our co-polymer to become Andure® and reflects damaging solar radiation by redirecting it into a harmless pattern. When we alloy rutile titanium ore with resin, we capture the benefits of this remarkable crystal.

ITEM

SPFAFSC

DESCRIPTION

ANDUREFLEX STACKING SIDE CHAIR

20.5"w x 24"d x 34.25"h x 18"sh

SPFAFAC

ANDUREFLEX STACKING ARM CHAIR

26.25"w x 24.25"d x 34.25"h x 18"sh

SPFPSCACB

BACK CUSHION FOR ANDUREFLEX STACKING CHAIRS

SPFPSCACS

SEAT CUSHION FOR ANDUREFLEX STACKING CHAIRS

SPFPSCAC-SET

CUSHION SET (BACK & SEAT) FOR ANDUREFLEX STACKING CHAIRS

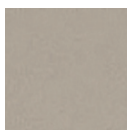
FRAME COLOURS (Add the colour code to the end of the code number)



White - W



Khaki - K



Pebble - P



ANDUREFLEX® HIGH BACK CHAIR

The AndureFlex® High Back Chair is designed to flex with the weight of your body while providing support for your back and head. Whether you use this high back chair for dining, on the patio or your front porch, it will provide comfort and relaxation. This product is shipped fully assembled. Frame comes in your choice of White, Khaki or Pebble. Cushions are available in a variety of Sunbrella® fabrics. Limited 10 year warranty against structural failure and is further warranted not to rot, split, crack or peel during this period.

SOLID CONSTRUCTION

The strength of our furniture is ensured by the use of solid construction and sophisticated engineered resin- Andure®. Our furniture is made from solid blocks of 3/8", 3/4" or 1 1/8" Andure® resin with titanium alloy.

UV EXPOSURE

Ultraviolet light takes its name from its ultra long wavelength. It is this wavelength that can penetrate and break the polymer chain causing the material to become brittle and chalky. Studies show that an unusually efficient light-absorbing molecule called HALS is effective to protect Andure's® long chain molecular structure from UV deterioration and thereby ensure the long life of our outdoor furniture.

SUN SHIELD

Common resin will fail as a result of the constant penetration of solar radiation. We fight the sun's fire with another fire - rutile - which is titanium ore. Rutile is alloyed with our co-polymer to become Andure® and reflects damaging solar radiation by redirecting it into a harmless pattern. When we alloy rutile titanium ore with resin, we capture the benefits of this remarkable crystal.

ITEM

SPFAFHBC

DESCRIPTION

ANDUREFLEX HIGH BACK CHAIR

24.5"w x 31.5"d x 46"h x 17"sh

SPFPFAFHBRB

BACK CUSHION FOR ANDUREFLEX HIGH BACK CHAIR

SPFPFAFHBRBRS

SEAT CUSHION FOR ANDUREFLEX HIGH BACK CHAIR

SPFPFAFHBRB-SET

CUSHION SET (BACK & SEAT) FOR ANDUREFLEX HIGH BACK CHAIR

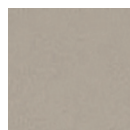
FRAME COLOURS (Add the colour code to the end of the code number)



White - W



Khaki - K



Pebble - P



Outdoor Seating



Arm Chair



2 Seater Bench



Rocker

JEFFERSON CHAIRS

The Jefferson arm chair retains the classic look and feel with comfort and elegance. The mortice and tenon joinery can be assembled and disassembled without tools or hardware. Choose from 3 standard backs. Frame comes in your choice of White, Khaki or Pebble. Cushions are available in a variety of Sunbrella® fabrics. Limited 10 year warranty against structural failure and is further warranted not to rot, split, crack or peel during this period.

SOLID CONSTRUCTION

The strength of our furniture is ensured by the use of solid construction and sophisticated engineered resin- Andure®. Our furniture is made from solid blocks of 3/8", 3/4" or 1 1/8" Andure® resin with titanium alloy.

UV EXPOSURE

Ultraviolet light takes its name from its ultra long wavelength. It is this wavelength that can penetrate and break the polymer chain causing the material to become brittle and chalky. Studies show that an unusually efficient light-absorbing molecule called HALS is effective to protect Andure's® long chain molecular structure from UV deterioration and thereby ensure the long life of our outdoor furniture.

SUN SHIELD

Common resin will fail as a result of the constant penetration of solar radiation. We fight the sun's fire with another fire - rutile - which is titanium ore. Rutile is alloyed with our co-polymer to become Andure® and reflects damaging solar radiation by redirecting it into a harmless pattern. When we alloy rutile titanium ore with resin, we capture the benefits of this remarkable crystal.

ITEM

DESCRIPTION

SPFJGC-{BACK}-{COLOUR}	JEFFERSON ARM CHAIR 24.25"w x 25"d x 35"h x 17,75"sh
SPFJR-{BACK}-{COLOUR}	JEFFERSON ROCKER CHAIR 24.25"w x 29.5"d x 33.75"h x 17,75"sh
SPFJB48-{BACK}-{COLOUR}	JEFFERSON 48" BENCH 50.75"w x 25.25"d x 35"h x 17.5"sh
SPFPC101B-{COLOUR}	BACK CUSHION FOR JEFFERSON CHAIRS
SPFPC101S-{COLOUR}	SEAT CUSHION FOR JEFFERSON CHAIRS
SPFPC101-SET-{COLOUR}	CUSHION SET (BACK & SEAT) FOR JEFFERSON CHAIRS

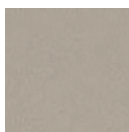
FRAME COLOURS



White - W



Khaki - K



Pebble - P

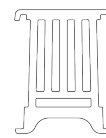
BACK STYLES



Lattice - L



Window - W



Slat - S

Outdoor

Outdoor Pedestal Tables



PEDESTAL TABLES

Our pedestal tables have the same thick pierced top as our four legged tables while offering unobstructed chair placement. The 29" dining height tables have 30" and 36" tops for use with our AndureFlex® Arm Chair and Jefferson Garden Chairs. Base and top comes in your choice of White, Khaki or Pebble. Limited 10 year warranty against structural failure and is further warranted not to rot, split, crack or peel during this period.

SOLID CONSTRUCTION

The strength of our furniture is ensured by the use of solid construction and sophisticated engineered resin- Andure®. Our furniture is made from solid blocks of 3/8", 3/4" or 1 1/8" Andure® resin with titanium alloy.

UV EXPOSURE

Ultraviolet light takes its name from its ultra long wavelength. It is this wavelength that can penetrate and break the polymer chain causing the material to become brittle and chalky. Studies show that an unusually efficient light-absorbing molecule called HALS is effective to protect Andure's® long chain molecular structure from UV deterioration and thereby ensure the long life of our outdoor furniture.

SUN SHIELD

Common resin will fail as a result of the constant penetration of solar radiation. We fight the sun's fire with another fire - rutile - which is titanium ore. Rutile is alloyed with our co-polymer to become Andure® and reflects damaging solar radiation by redirecting it into a harmless pattern.

When we alloy rutile titanium ore with resin, we capture the benefits of this remarkable crystal.

ITEM

SPFPT30-{COLOUR}

DESCRIPTION

PEDESTAL TABLE, 30" ROUND

30" round x 29"h, 40 lbs.

SPFPT36-{COLOUR}

PEDESTAL TABLE, 36" ROUND

36" round x 29"h, 54 lbs.

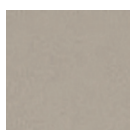
FRAME COLOURS (Add the colour code to the end of the code number)



White - W



Khaki - K



Pebble - P

Outdoor



Outdoor Four Leg Tables



FOUR LEG TABLES

The four leg tables are classic with 1-1/2" thickness around octagonal/round perimeters. Each true mortice and tenon joint is locked by a stainless steel pin for long term strength. Rain drains immediately through the slots in the traditional "ten board top" and the 2" umbrella shaft is firmly supported by the table brace. Additional umbrella stabilization at the ground is sometimes necessary. Limited 10 year warranty against structural failure and is further warranted not to rot, split, crack or peel during this period.

SOLID CONSTRUCTION

The strength of our furniture is ensured by the use of solid construction and sophisticated engineered resin- Andure®. Our furniture is made from solid blocks of 3/8", 3/4" or 1 1/8" Andure® resin with titanium alloy.

UV EXPOSURE

Ultraviolet light takes its name from its ultra long wavelength. It is this wavelength that can penetrate and break the polymer chain causing the material to become brittle and chalky. Studies show that an unusually efficient light-absorbing molecule called HALS is effective to protect Andure's® long chain molecular structure from UV deterioration and thereby ensure the long life of our outdoor furniture.

SUN SHIELD

Common resin will fail as a result of the constant penetration of solar radiation. We fight the sun's fire with another fire - rutile - which is titanium ore. Rutile is alloyed with our co-polymer to become Andure® and reflects damaging solar radiation by redirecting it into a harmless pattern.

When we alloy rutile titanium ore with resin, we capture the benefits of this remarkable crystal.

ITEM

SPFJRT48-(COLOUR)

DESCRIPTION

FOUR LEG TABLE, 48" ROUND

48" round x 29"h, 73 lbs

SPFJDT42-(COLOUR)

FOUR LEG TABLE, 42" OCTAGON

42" octagonal x 29"h, 67 lbs

SPFJGT60-(COLOUR)

GATHERING TABLE

42"w x 60"d x 29"h, 125 lbs

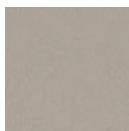
FRAME COLOURS (Add the colour code to the end of the code number)



White - W



Khaki - K



Pebble - P

Outdoor Occasional Tables



OCCASIONAL TABLES

Constructed with a slotted top to reduce puddling on the top surface. Limited 10 year warranty against structural failure and is further warranted not to rot, split, crack or peel during this period.

SOLID CONSTRUCTION

The strength of our furniture is ensured by the use of solid construction and sophisticated engineered resin- Andure®. Our furniture is made from solid blocks of 3/8", 3/4" or 1 1/8" Andure® resin with titanium alloy.

UV EXPOSURE

Ultraviolet light takes its name from its ultra long wavelength. It is this wavelength that can penetrate and break the polymer chain causing the material to become brittle and chalky. Studies show that an unusually efficient light-absorbing molecule called HALS is effective to protect Andure's® long chain molecular structure from UV deterioration and thereby ensure the long life of our outdoor furniture.

SUN SHIELD

Common resin will fail as a result of the constant penetration of solar radiation. We fight the sun's fire with another fire - rutile - which is titanium ore. Rutile is alloyed with our co-polymer to become Andure® and reflects damaging solar radiation by redirecting it into a harmless pattern.

When we alloy rutile titanium ore with resin, we capture the benefits of this remarkable crystal.

ITEM

SPFJST-{COLOUR}

DESCRIPTION

SIDE TABLE

24"w x 20"d x 17"h

SPFJCT36-{COLOUR}

COCKTAIL TABLE, 36" ROUND

36" round x 17"h

SPFJTB48-{COLOUR}

COFFEE TABLE

49"w x 19"d x 17"h

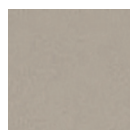
FRAME COLOURS (Add the colour code to the end of the code number)



White - W



Khaki - K



Pebble - P

Outdoor



Outdoor Accessories



JEFFERSON LITTER RECEPTACLE

The litter receptacle is carved from solid blocks of Andure® and fitted with a removable liner. The style also coordinates with the Jefferson line. The removable lid gives access to the well ventilated and drained interior. Liner sold separately.

ITEM #	DESCRIPTION
SPFJLR-{COLOUR}	LITTER RECEPTACLE 26.26"w x 22.5"d x 34.5"h
SPFJLR-LINER-{COLOUR}	LITTER RECEPTACLE LINER



JEFFERSON ASH URN/PLANT STAND

The Jefferson Ash Urn includes a 10" by 10" galvanized steel, baked-enamel ash tray. With the tray removed it can be used as a combination plant stand/planter.

ITEM #	DESCRIPTION
SPFJAU-{COLOUR}	ASH URN 10.25"w x 10.75"d x 29"h
SPFJPS-{COLOUR}	PLANT STAND 10.25"w x 10.75"d x 29"h



JEFFERSON PLANTER WITH LINER

The ultra-durable qualities of Andure® have no better application than for substantial planters. The style is coordinated with the Jefferson line of outdoor furniture. A polyethylene liner is included. Lid sold separately.

ITEM #	DESCRIPTION
SPFJPL-{COLOUR}	PLANTER WITH LINER 26.25"w x 22.5"d x 18"h
SPFJPL-LID-{COLOUR}	LID FOR PLANTER

FRAME COLOURS (Add the colour code to the end of the code number)



White - W



Khaki - K



Pebble - P

Outdoor



UMBRELLA

9' umbrella with 8 ribs. Available in most Sunbrella® colours.

ITEM #	DESCRIPTION
SPFUMB908	UMBRELLA



UMBRELLA BASE

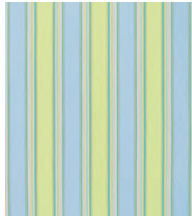
ITEM #	DESCRIPTION
SPFUB32	UMBRELLA BASE



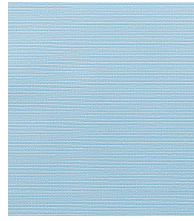


Cushion & Umbrella Fabrics

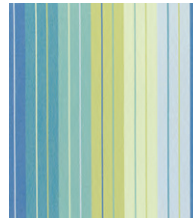
Outdoor



Sunbrella #5602-D
Bravada Limelight



Sunbrella #5410-C
Canvas Air Blue



Sunbrella #5608-C
Seville Stripe



Swavelle #C922-A
Tulsa Terrace Spa



Swavelle #C923-A
Cymbeline Terrace Polar Blue



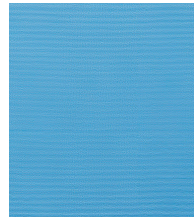
Sunbrella #5621-0000-C
Brannon Whisper



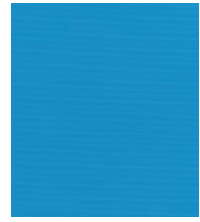
Sunbrella #5413-C
Canvas Spa



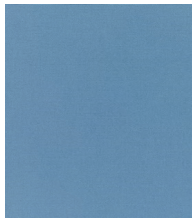
Sunbrella #56001-0000-D
Dolce Oasis



Sunbrella #5426-C
Canvas Capri



Sunbrella #5401-C
Canvas Pacific Blue



Sunbrella #5452-C
Canvas Sapphire Blue



Sunbrella #5439-C
Canvas Navy



Sunbrella #5420-0000-C
Canvas Mineral Blue



Sunbrella #8050-E
Dupione Paradise



Sunbrella #5487-C
Canvas Fern



Swavelle #C920-A
Marinda Stripe Terrace Nector



Sunbrella #5414-C
Canvas Wheat



Swavelle #C921-A
Cherry Hill Terrace Nector



Sunbrella #5488-C
Canvas Teak



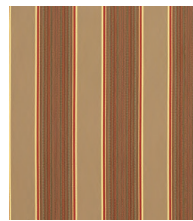
Sunbrella #5432-D
Canvas Bay Brown



Sunbrella #5470-C
Canvas Walnut



Sunbrella #5425-C
Canvas Cocoa



Sunbrella #5606-0000-C
Davidson Redwood



Sunbrella #5476-C
Canvas Heather Beige



Sunbrella #45184-0004-F
Mojito Coffee Bean

Note: Colours shown are limited by printing capabilities. Actual fabric may vary slightly. Contact your sales representative for an actual laminate sample if an exact colour is needed.

Cushion & Umbrella Fabrics



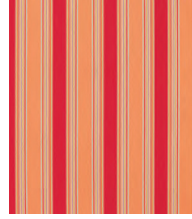
Sunbrella #5422-0000-C
Canvas Antique Beige



Sunbrella #5626-0000-C
Maxim Cocoa



Sunbrella #5438-C
Canvas Buttercup



Sunbrella #5601-D
Bravada Salsa



Sunbrella #5406-D
Canvas Tangerine



Sunbrella #54010-D
Canvas Rust



Sunbrella #5440-D
Canvas Terracotta



Sunbrella #8056-E
Dupione Henna



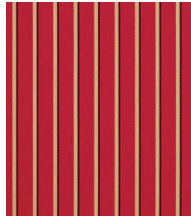
Sunbrella #5436-D
Canvas Burgundy



Richloom #C991-A
Palm Floral Garden



Richloom #3106-C
Arrington Olive



Sunbrella #5603-0000-D
Harwood Crimson



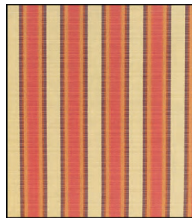
Sunbrella #5403-0000-D
Canvas Jockey Red



Richloom #D849-A
Lyndhurst Patriot



P. Kaufman #D901-A
Chippendale Fretwork Mocha



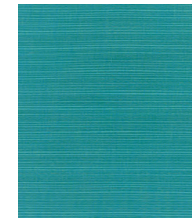
Sunbrella #8021-D
Dimone Flame



Sunbrella #8053-D
Dupione Papaya



Sunbrella #8020-D
Dimone Rainforest



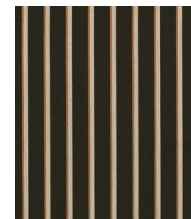
Sunbrella #8019-D
Dupione Deep Sea



Premier #C846-B
Vertical Black/Almond



Sunbrella #5471-0000-C
Canvas Raven Black



Sunbrella #56023-0000-C
Harwood Onyx

Note: Colours shown are limited by printing capabilities. Actual fabric may vary slightly. Contact your sales representative for an actual laminate sample if an exact colour is needed.

Outdoor



Occasional Tables



QUEEN ANNE LEG OCCASIONAL TABLES

The Queen Anne series of occasional tables is available in a number of different shapes and sizes. All tables are available with a bullnosed wood edge or the traditional routed high density edge. Apron is available in a square, no cut out style or with a scalloped cut out. All tables have high pressure laminate top surfaces in any standard Formica, Nevamar, Wilsonart or Pionite colour choice. Custom sizes are available.

ITEM

DESCRIPTION

SPFET2424Q	END TABLE, ROUTERED EDGE, SCALLOPED APRON, 24"x24"x21"
SPFET24RQ	END TABLE, ROUTERED EDGE, SCALLOPED APRON, 24" Round x 21"h
SPFET2424QBNE	END TABLE, BULLNOSED EDGE, SCALLOPED APRON, 24"x24"x21"
SPFET24RQBNE	END TABLE, BULLNOSED EDGE, SCALLOPED APRON, 24" Round x 21"h
SPFCT2448Q	COFFEE TABLE, ROUTERED EDGE, SCALLOPED APRON, 24"x48"x16"
SPFCT2448OVQ	COFFEE TABLE, OVAL, ROUTERED EDGE, SCALLOPED APRON, 24"x48"x16"
SPFCT2448QBNE	COFFEE TABLE, BULLNOSED EDGE, SCALLOPED APRON, 24"x48"x16"
SPFCT2448OVQBNE	COFFEE TABLE, OVAL, BULLNOSED EDGE, SCALLOPED APRON, 24"x48"x16"
SPFST1654Q	SOFA TABLE, ROUTERED EDGE, SCALLOPED APRON, 16"x54"x28"
SPFST1654QBNE	SOFA TABLE, BULLNOSED EDGE, SCALLOPED APRON, 16"x54"x28"
SPFET2424QSA	END TABLE, ROUTERED EDGE, SQUARE APRON, 24"x24"x21"
SPFET24RQSA	END TABLE, ROUTERED EDGE, SQUARE APRON, 24" Round x 21"h
SPFET2424QSABNE	END TABLE, BULLNOSED EDGE, SQUARE APRON, 24"x24"x21"
SPFET24RQSABNE	END TABLE, BULLNOSED EDGE, SQUARE APRON, 24" Round x 21"h
SPFCT2448QSA	COFFEE TABLE, ROUTERED EDGE, SQUARE APRON, 24"x48"x16"
SPFCT2448OVQSA	COFFEE TABLE, OVAL, ROUTERED EDGE, SQUARE APRON, 24"x48"x16"
SPFCT2448QSABNE	COFFEE TABLE, BULLNOSED EDGE, SQUARE APRON, 24"x48"x16"
SPFCT2448OVQSABNE	COFFEE TABLE, OVAL, BULLNOSED EDGE, SQUARE APRON, 24"x48"x16"
SPFST1654QSA	SOFA TABLE, ROUTERED EDGE, SQUARE APRON, 16"x54"x28"
SPFST1654QSABNE	SOFA TABLE, BULLNOSED EDGE, SQUARE APRON, 16"x54"x28"

Tables



TAPERED LEG OCCASIONAL TABLES

The Tapered Leg series of occasional tables is available in a number of different shapes and sizes. All tables are available with a bullnosed wood edge or the traditional routed high density edge. Apron is available in a square, no cut out style or with an arched cut out. All tables have high pressure laminate top surfaces in any standard Formica, Nevamar, Wilsonart or Pionite colour choice. Custom sizes are available.

ITEM

SPFET2424T
 SPFET24RT
 SPFET2424TBNE
 SPFET24RTBNE
 SPFCT2448T
 SPFCT2448OVT
 SPFCT2448TBNE
 SPFCT2448OVTBNE
 SPFST1654T
 SPFST1654TBNE
 SPFET2424TSA
 SPFET24RTSA
 SPFET2424TSABNE
 SPFET24RTSABNE
 SPFCT2448TSA
 SPFCT2448OVTSA
 SPFCT2448TSABNE
 SPFCT2448OVTSA
 SPFST1654TSA
 SPFST1654TSABNE

DESCRIPTION

END TABLE, ROUTERED EDGE, ARCHED APRON, 24"x24"x21"
 END TABLE, ROUTERED EDGE, ARCHED APRON, 24" Round x 21"h
 END TABLE, BULLNOSED EDGE, ARCHED APRON, 24"x24"x21"
 END TABLE, BULLNOSED EDGE, ARCHED APRON, 24" Round x 21"h
 COFFEE TABLE, ROUTERED EDGE, ARCHED APRON, 24"x48"x16"
 COFFEE TABLE, OVAL, ROUTERED EDGE, ARCHED APRON, 24"x48"x16"
 COFFEE TABLE, BULLNOSED EDGE, ARCHED APRON, 24"x48"x16"
 COFFEE TABLE, OVAL, BULLNOSED EDGE, ARCHED APRON, 24"x48"x16"
 SOFA TABLE, ROUTERED EDGE, ARCHED APRON, 16"x54"x28"
 SOFA TABLE, BULLNOSED EDGE, ARCHED APRON, 16"x54"x28"
 END TABLE, ROUTERED EDGE, SQUARE APRON, 24"x24"x21"
 END TABLE, ROUTERED EDGE, SQUARE APRON, 24" Round x 21"h
 END TABLE, BULLNOSED EDGE, SQUARE APRON, 24"x24"x21"
 END TABLE, BULLNOSED EDGE, SQUARE APRON, 24" Round x 21"h
 COFFEE TABLE, ROUTERED EDGE, SQUARE APRON, 24"x48"x16"
 COFFEE TABLE, OVAL, ROUTERED EDGE, SQUARE APRON, 24"x48"x16"
 COFFEE TABLE, BULLNOSED EDGE, SQUARE APRON, 24"x48"x16"
 COFFEE TABLE, OVAL, BULLNOSED EDGE, SQUARE APRON, 24"x48"x16"
 SOFA TABLE, ROUTERED EDGE, SQUARE APRON, 16"x54"x28"
 SOFA TABLE, BULLNOSED EDGE, SQUARE APRON, 16"x54"x28"

Tables



Occasional Tables



SQUARE LEG OCCASIONAL TABLES

The square Leg series of occasional tables is available in a number of different shapes and sizes. All tables are available with a bullnosed wood edge or the traditional routed edge. Apron is available in a square, no cut out style or with an arched cut out. All tables have high pressure laminate top surfaces in any standard Formica, Nevamar, Wilsonart or Pionite colour choice. Custom sizes are available.

ITEM

SPFET2424C

SPFET24RC

SPFET2424CBNE

SPFET24RCBNE

SPFCT2448C

SPFCT2448OVC

SPFCT2448CBNE

SPFCT2448OVCBNE

SPFST1654C

SPFST1654CBNE

SPFET2424CSA

SPFET24RCSA

SPFET2424CSABNE

SPFET24RCSABNE

SPFCT2448CSA

SPFCT2448OVCSA

SPFCT2448CSABNE

SPFCT2448OVCSABNE

SPFST1654CSA

SPFST1654CSABNE

DESCRIPTION

END TABLE, ROUTERED EDGE, ARCHED APRON, 24"x24"x21"

END TABLE, ROUTERED EDGE, ARCHED APRON, 24" Round x21"h

END TABLE, BULLNOSED EDGE, ARCHED APRON, 24"x24"x21"

END TABLE, BULLNOSED EDGE, ARCHED APRON, 24" Round x 21"h

COFFEE TABLE, ROUTERED EDGE, ARCHED APRON, 24"x48"x16"

COFFEE TABLE, OVAL, ROUTERED EDGE, ARCHED APRON, 24"x48"x16"

COFFEE TABLE, BULLNOSED EDGE, ARCHED APRON, 24"x48"x16"

COFFEE TABLE, OVAL, BULLNOSED EDGE, ARCHED APRON, 24"x48"x16"

SOFA TABLE, ROUTERED EDGE, ARCHED APRON, 16"x54"x28"

SOFA TABLE, BULLNOSED EDGE, ARCHED APRON, 16"x54"x28"

END TABLE, ROUTERED EDGE, SQUARE APRON, 24"x24"x21"

END TABLE, ROUTERED EDGE, SQUARE APRON, 24" Round x 21"h

END TABLE, BULLNOSED EDGE, SQUARE APRON, 24"x24"x21"

END TABLE, BULLNOSED EDGE, SQUARE APRON, 24" Round x 21"h

COFFEE TABLE, ROUTERED EDGE, SQUARE APRON, 24"x48"x16"

COFFEE TABLE, OVAL, ROUTERED EDGE, SQUARE APRON, 24"x 48"x16"

COFFEE TABLE, BULLNOSED EDGE, SQUARE APRON, 24"x48"x16"

COFFEE TABLE, OVAL, BULLNOSED EDGE, SQUARE APRON, 24"x48"x16"

SOFA TABLE, ROUTERED EDGE, SQUARE APRON, 16"x54"x28"

SOFA TABLE, BULLNOSED EDGE, SQUARE APRON, 16"x54"x28"

Tables



SHAKER OCCASIONAL TABLES

Solid wood Shaker style legs and apron with a high pressure laminate top surface. Only available in Natural Maple, Cherry Mahogany, Southern Cherry and Walnut wood finishes.

ITEM

SPF8150-14
SPF8150-13
SPF8150-15

DESCRIPTION

END TABLE, SHAKER, 22"w x 26"d x 22"h
COFFEE TABLE, SHAKER, 42"w x 22"d x 17"h
SOFA TABLE, SHAKER, 50"w x 16"d x 28 ¼"h



Pedestal Bases

Tables



#100 METAL PEDESTAL TABLE BASE

The #100 metal pedestal base features 14 gauge tubular steel, adjustable glides, bullet shape end caps and a top mounting plate. Standard height is 28" but custom heights are available if specified. Available in any of our standard epoxy colours or in a polished chrome finish (upcharge). Base spreads are 23" (24" square top or 30" or smaller round top), 28" (30" to 36" square or round tops), 32" (38" to 42" square or round tops) and 36" (44" to 48" square or round top).



#102 METAL PEDESTAL TABLE BASE

The #102 metal pedestal base (2/set) features 14 gauge tubular steel, adjustable glides, bullet shape end caps and a top mounting plate. Standard height is 28" but custom heights are available if specified. Available in any of our standard epoxy colours or in a polished chrome finish (upcharge). Leg spread is 28" and set of two can be used on top 30" to 36" wide and up to 96" long.



#108 METAL ADJ HEIGHT PEDESTAL TABLE BASE

The #108 metal pedestal base features 14 gauge tubular steel, adjustable glides, bullet shape end caps and a top mounting plate. Height adjusts in 1" increments from 26" to 34" high. Available in any of our standard epoxy colours or in a polished chrome finish (upcharge). Base spreads are 28" (30" to 36" square or round tops), 32" (38" to 42" square or round tops) and 36" (44" to 48" square or round top).

TABLE CODE NUMBER FORMULA

SPF + 100 + FT + 4242 + PV = SPF100FT4242PV
 Prefix Base # Options Top Size Edge Type Table Code #



#300 METAL PEDESTAL TABLE BASE

The #300 metal pedestal base features 14 gauge tubular steel, adjustable glides, arched legs and a top mounting plate. Standard height is 28" but custom heights are available if specified. Available in any of our standard epoxy colours or in a polished chrome finish (upcharge). Base spreads are 23" (24" square top or 30" or smaller round top), 28" (30" to 36" square or round tops), 32" (38" to 42" square or round tops) and 36" (44" to 48" square or round top).



#302 METAL PEDESTAL TABLE BASE

The #302 metal pedestal base (2/set) features 14 gauge tubular steel, adjustable glides, arched legs and a top mounting plate. Standard height is 28" but custom heights are available if specified. Available in any of our standard epoxy colours or in a polished chrome finish (upcharge). Leg spread is 28" and set of two can be used on top 30" to 36" wide and up to 96" long.





Pedestal Bases

Tables



2000 SERIES CAST IRON TABLE BASE

Cast Iron X base provides an economical but sturdy table base for tops of all sizes. Standard height is 28". Comes standard in black finish but is available in any of our standard epoxy colours or in a polished chrome finish at an upcharge.

BASE #	DESCRIPTION
2015	22" Spread for 24" to 30" Tops
2025	30" Spread for 32" to 40" Tops
2033	33" Spread for 42" to 48" Tops
2099	22" x 30" Offset Spread for Small Rectangular Tops



2100 SERIES CAST IRON TABLE BASE

Cast Iron X base with raised profile provides a sturdy table base for tops of all sizes. Standard height is 28". Comes standard in black finish but is available in any of our standard epoxy colours or in a polished chrome finish at an upcharge.

BASE #	DESCRIPTION
2115	22" Spread for 24" to 30" Tops
2125	30" Spread for 32" to 42" Tops



3000 SERIES CAST IRON TABLE BASE

Cast Iron round base with radiant profile provides a sturdy table base for tops of all sizes. Standard height is 28". Comes standard in black finish but is available in any of our standard epoxy colours at an upcharge.

BASE #	DESCRIPTION
3017	17" Spread for 24" to 30" Tops
3022	22" Spread for 32" to 40" Tops



7000 SERIES CAST IRON TABLE BASE

Cast Iron round base with spoon profile provides a sturdy table base for tops of all sizes. Standard height is 28". Comes standard in black finish but is available in any of our standard epoxy colours at an upcharge.

BASE #	DESCRIPTION
7017	17" Spread for 24" to 30" Tops
7022	22" Spread for 32" to 40" Tops
7030	30" Spread for 42" to 48" Tops

TABLE CODE NUMBER FORMULA

$$\begin{array}{ccccccc}
 \text{SPF} & + & \text{100} & + & \text{FT} & + & \text{4242} & + & \text{PV} & = & \text{SPF100FT4242PV} \\
 \text{Prefix} & & \text{Base \#} & & \text{Options} & & \text{Top Size} & & \text{Edge Type} & & \text{Table Code \#}
 \end{array}$$



4524 CAST IRON TABLE BASE

Cast Iron base provides a sturdy table base with decorative design for tops of all sizes. Standard height is 28". Comes standard in black finish but is available in any of our standard epoxy colours at an upcharge.

BASE #	DESCRIPTION
4524	24" Spread for 30" to 40" Tops



4125 SERIES CAST IRON TABLE BASE

Cast Iron base provides a sturdy table base with decorative design for tops of all sizes. Standard height is 28". Comes standard in black finish but is available in any of our standard epoxy colours at an upcharge.

BASE #	DESCRIPTION
4122	22" Spread for 24" to 30" Tops
4125	25" Spread for 36" to 40" Tops



5104 CAST IRON TABLE BASE

Cast Iron base provides a sturdy table base with decorative design for tops of all sizes. Standard height is 28". Comes standard in black finish but is available in any of our standard epoxy colours at an upcharge.

BASE #	DESCRIPTION
5104	22" Spread for 24" to 36" Tops



TABLE CODE NUMBER FORMULA

SPF	+	100	+	FT	+	4242	+	PV	=	SPF100FT4242PV
Prefix		Base #		Options		Top Size		Edge Type		Table Code #



Pedestal Bases

Tables



PD4008 TABLE BASE

Solid Beechwood wood base. Standard height is 28". Available in any standard wood finish.

BASE #	DESCRIPTION
PD4008	27"x 27" Spread for 36" to 42" Tops



PD4009 TABLE BASE

Solid Beechwood wood base. Standard height is 28". Available in any standard wood finish.

BASE #	DESCRIPTION
PD4009	27"x 27" Spread for 36" to 42" Tops



PD4010 TABLE BASE

Solid Beechwood wood base. Standard height is 28". Available in any standard wood finish.

BASE #	DESCRIPTION
PD4010	32"x 32" Spread for 36" to 48" Tops

TABLE CODE NUMBER FORMULA

$$\begin{array}{ccccccc}
 \text{SPF} & + & \text{100} & + & \text{FT} & + & \text{4242} & + & \text{PV} & = & \text{SPF100FT4242PV} \\
 \text{Prefix} & & \text{Base \#} & & \text{Options} & & \text{Top Size} & & \text{Edge Type} & & \text{Table Code \#}
 \end{array}$$



Code: SPF500ADJCG4242RSPV

#500 ROUND METAL TABLE LEGS

The #500 round legs are a 2.5" diameter, 14g steel leg. All legs have adjustable glides on the bottom to help with levelling. Each leg has a flat metal mounting plate at the top of the leg to allow for easy mounting to any table top. Standard height is 28" but custom heights are available upon request. Choose from any of our standard epoxy coatings for the finishing on the legs. Legs are available with optional 3" adjustable height cup glides and also available with optional casters on all four legs or just two legs.



#501 SQUARE METAL TABLE LEGS

The #501 Square legs are a 2.5"x2.5", 14g steel leg. All legs have adjustable glides on the bottom to help with levelling. Each leg has a flat metal mounting plate at the top of the leg to allow for easy mounting to any table top. Standard height is 28" but custom heights are available upon request. Choose from any of our standard epoxy coatings for the finishing on the legs. Legs are available with optional casters on all four legs or just two legs.



TABLE CODE NUMBER FORMULA

SPF + **100** + **FT** + **4242** + **PV** = **SPF100FT4242PV**
 Prefix Base # Options Top Size Edge Type Table Code #



Four Leg Bases



#504 SERIES WOOD LEG BASES

Our four legged wood bases are available in square, tapered (not shown) or Queen Anne leg styles. All bases are made of solid hardwoods and finished in any of our standard wood finishes. Legs are securely fastened with a metal corner bracket to the base apron. Base aprons are available with no cut outs or with a cut out to allow chair arms to access under the table. Standard height is 28" but custom heights are available upon request. Bases will accommodate square tops sizes 36"x36", 38"x38", 40"x40", 42"x42", 48"x48" and also 48" round. All legs have a height adjustable glide on the bottom for levelling the table.

BASE #	DESCRIPTION
504SQ	Square Legs, No Cut out apron
504TP	Tapered Legs, No Cut out apron
504QA	Queen Anne Legs, No Cut out apron
504SQC	Square Legs, Cut out apron
504TPC	Tapered Legs, Cut out apron
504QAC	Queen Anne Legs, Cut out apron

TABLE CODE NUMBER FORMULA

SPF	+	100	+	FT	+	4242	+	PV	=	SPF100FT4242PV
Prefix		Base #		Options		Top Size		Edge Type		Table Code #



50 SERIES FOLDING LEG TABLE

Designed for rectangular tops, this standard folding leg table features metal legs in your choice of brown or black epoxy coatings. Tops are high pressure laminate in any of the laminate manufacturers standard laminates. Tops are available in 30"x60", 30"x72", 30"x84", 30"x96", 36"x60", 36"x72", 36"x84" and 36"x96" and with any of the standard edge details.



BASE #	DESCRIPTION
50	Folding Base for Rectangular tops

70 SERIES FOLDING LEG TABLE

Designed for square or round tops, this standard folding leg table features metal legs in your choice of brown or black epoxy coatings. Tops are high pressure laminate in any of the laminate manufacturers standard laminates. Tops are available in 30", 36", 38", 40", 42" round and 30"x30", 36"x36", 38"x38", 40"x40" square with any of the standard edge details.



BASE #	DESCRIPTION
70	Folding Base for Square or Round tops

FEEDING TABLES

Modular feeding table can be configured in many ways. Crescent tops can be used by themselves or additional rectangular pieces can be added to expand seating capacity around the table. Tops have PVC edge to prevent damage from wheelchairs bumping against them. Modular T bases are easily removed for storage. Bases and edges come in all standard edge and epoxy colours. Feeding stool comes in a black vinyl top and adjusts using a pneumatic lift cylinder.

ITEM #	DESCRIPTION
SPFCRESCENTPV	FEEDING TABLE TOP, HALF CRESCENT 18"X48"
SPF1824PV	FEEDING TABLE TOP, RECTANGULAR 18"X24"
SPF1836PV	FEEDING TABLE TOP, RECTANGULAR 18"X36"
SPFMTBASE	FEEDING TABLE TOP, MODULAR T BASE WITH MOUNTING BRACKETS
SPF1000STOOL	FEEDING STOOL, PNEUM ADJ HT, 5 CASTERS
SPF1000STOOLWB	FEEDING STOOL W BACK, PNEUM ADJ HT, 5 CASTERS

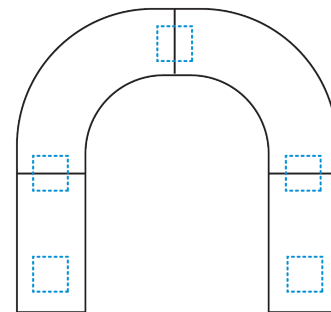
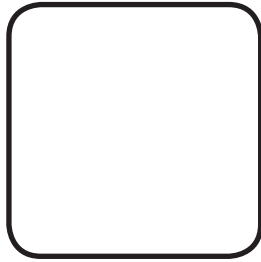


TABLE CODE NUMBER FORMULA										
SPF	+	100	+	FT	+	4242	+	PV	=	SPF100FT4242PV
Prefix		Base #		Options		Top Size		Edge Type		Table Code #

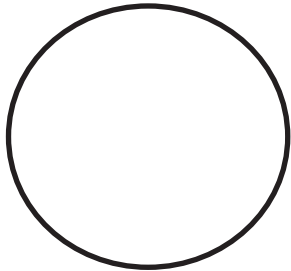


Top Sizes



SQUARE TOPS

Tops are 1 1/8" thick, 45lb particle board core with a high pressure laminate surface in any of the laminate manufacturer's standard laminates and a phenolic balance sheet on the underside. All corners are 1" radius (other radius sizes available if requested). Tops are available in 24"x24", 30"x30", 32"x32", 36"x36", 38"x38", 40"x40", 42"x42" and 48"x48" and with any of the standard edge details.



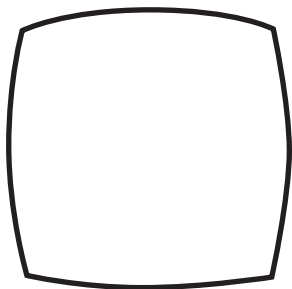
ROUND TOPS

Tops are 1 1/8" thick, 45lb particle board core with a high pressure laminate surface in any of the laminate manufacturer's standard laminates and a phenolic balance sheet on the underside. Tops are available in 24", 30", 32", 36", 38", 40", 42" and 48" round and with any of the standard edge details.



RECTANGULAR TOPS

Tops are 1 1/8" thick, 45lb particle board core with a high pressure laminate surface in any of the laminate manufacturer's standard laminates and a phenolic balance sheet on the underside. All corners are 1" radius (other radius sizes available if requested). Tops are available in 24"x30", 24"x36", 30"x36", 30"x42", 30"x48", 30"x60", 30"x72", 30"x84", 30"x96", 36"x48", 36"x60", 36"x72", 36"x84" and 36"x96" with any of the standard edge details.



RADIUS SQUARE TOPS

Tops are 1 1/8" thick, 45lb particle board core with a high pressure laminate surface in any of the laminate manufacturer's standard laminates and a phenolic balance sheet on the underside. Tops are available in 36"x36"/42"x42", 38"x38"/44"x44" and 42"x42"/48"x48" sizes with any of the standard edge details. Use the larger of the two dimensions with "RS" at the end of it as the code number for the top. I.e...the 36" x 36"/42" x 42" Radius Square top would be could "4242RS"

TABLE CODE NUMBER FORMULA

SPF	+	100	+	FT	+	4242	+	PV	=	SPF100FT4242PV
		Prefix		Base #		Options		Top Size		Edge Type
										Table Code #



FLIP TOP OPTION

The flip top option allows the top to be flipped up vertically in order to provide extra space for storing the table. This option is available on any of the 100 and 300 series of tables. Add "FT" after the base number in the table code number to add the Flip Top option on the table.



SELF LEVELLING GLIDE OPTION

All tables come standard with a nylon, manually adjustable glide. The self levelling glide is available as an option on all the 100, 300 and 500 series tables. This glide will automatically adjust to any unlevel surfaces without having to bend down and adjust the glide. Perfect for eliminating wobbly tables every time they are moved to a different location on the floor. Add "SL" after the base number in the table code number to add the Self Levelling Glide option on the table.



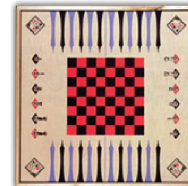
CASTER OPTION

Casters can be added to any of the 100, or 500 series tables. Tables can have all four casters (4C) or two casters/two glides (CG) depending on your preference. Add "4C" or "CG" after the base number in the table code number to add the caster options on the table.



CUSTOM INLAY TOPS

Tops can be customized to have inlay designs such as the games inlay shown. Custom laminate designs with inlay poly resin seams can also be done.



DROP LEAF EXTENSION

This 10" x 20" drop leaf extension is available on the 42x42 or 48x48 square table tops as an option. The drop leaf flips out and locks in to place for residents in wheelchairs to have a table platform close to them and then neatly folds and tucks under the table when not in use. Two drop leaves per table mounted on opposite sides of the table so that the two other sides of the table can be used for normal seating.

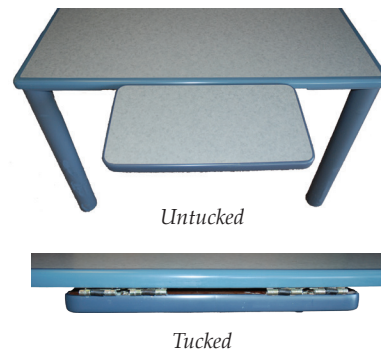


TABLE CODE NUMBER FORMULA

SPF	+	100	+	FT	+	4242	+	PV	=	SPF100FT4242PV
Prefix		Base #		Options		Top Size		Edge Type		Table Code #



Edge and Colour Choices



PVC EDGE (PV)

1 1/8" x 1/4" T-mold PVC edge provides a protective edging on any table. Available in any of the standard edge/base colours. Use "PV" as the code for this edge when creating your table code number.



PVC BULLNOSE EDGE (PB)

1 1/8" x 3/4" T-mold PVC edge provides a protective edging on any table. Available in any of the standard edge/base colours. Use "PB" as the code for this edge when creating your table code number.



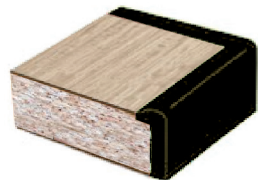
WOOD BULLNOSE EDGE (WB)

Solid wood, bullnosed edge is 1"x1" in size and is available in solid oak or maple. Edge can be stained to match any wood finish. Use "WB" as the code for this edge when creating your table code number.



POLY RESIN EDGE (PR)

Special formulated poly resin is poured in to an edge mold as a liquid and then solidifies to become a solid, seamless one piece edge. Colour is solid all the way through the edge so any scratches can be sanded smooth with steel wool and shined back to the original beauty with Armour-all. Use "PR" as the code for this edge when creating your table code number.



RAISED SPILL PROOF POLY RESIN EDGE (RS)

Same qualities as the poly resin edge above except built up on the edge to prevent any liquids that are spilled from rolling off the table. Use "RS" as the code for this edge when creating your table code number.

TABLE CODE NUMBER FORMULA

SPF	+	100	+	FT	+	4242	+	PV	=	SPF100FT4242PV
Prefix		Base #		Options		Top Size		Edge Type		Table Code #

Epoxy Base and Edge Colour Choices



STANDARD EPOXY BASE & EDGE COLOUR CHOICES FOR TABLES



Black



Brown



Burgundy



Dark Blue



Graphite Blue



Dark Green



Hunter Green



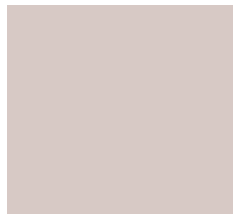
Sage Green



Mauve



Graphite



Light Beige



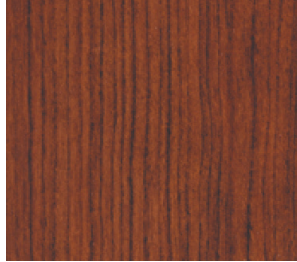
Beige

Note: Actual colour may vary from picture shown due to printing limitations. Please request an actual colour sample chip if an exact sample is needed.

Tables



Edge and Colour Choices



A variety of High Pressure laminates from all the major manufacturer's are available for all table tops. Choose from pattern or wood grain laminates. Visit the laminate manufacturer's website to view all the standard laminates available to choose from. Special Games Laminate shown above is available for any table.



www.wilsonart.com



www.pionite laminates.com



www.nevamar.com



www.formica.com

Tables



TRADITIONAL BOOKCASES

Our Traditional Bookcases feature a solid wood bottom skirt and top crown molding. Shelves are adjustable in two inch increments. Listed below are our standard sizes but any custom size and shelf quantity can be specified.

ITEM #	DESCRIPTION
SPFBCT3648	BOOKCASE, 36" w x 48" h x 12" d, 3 Adjustable Shelves
SPFBCT3660	BOOKCASE, 36" w x 60" h x 12" d, 4 Adjustable Shelves
SPFBCT3672	BOOKCASE, 36" w x 72" h x 16" d, 4 Adj & 1 Fix Shelves
SPFBCT4860	BOOKCASE, 48" w x 60" h x 16" d, 4 Adjustable Shelves
SPFBCT4872	BOOKCASE, 48" w x 72" h x 16" d, 4 Adj & 1 Fix Shelves
SPFBCT4884	BOOKCASE, 48" w x 84" h x 16" d, 4 Adj & 1 Fix Shelves



SHAKER BOOKCASES

Our Shaker Bookcases feature a solid wood construction. Shelves are adjustable in two inch increments. Listed below are our standard sizes but any custom size and shelf quantity can be specified.

ITEM #	DESCRIPTION
SPFBSC3648	BOOKCASE, 36" w x 48" h x 12" d, 3 Adjustable Shelves
SPFBSC3660	BOOKCASE, 36" w x 60" h x 12" d, 4 Adjustable Shelves
SPFBSC3672	BOOKCASE, 36" w x 72" h x 16" d, 4 Adj & 1 Fix Shelves
SPFBSC4860	BOOKCASE, 48" w x 60" h x 16" d, 3 Adjustable Shelves
SPFBSC4872	BOOKCASE, 48" w x 72" h x 16" d, 4 Adj & 1 Fix Shelves
SPFBSC4884	BOOKCASE, 48" w x 84" h x 16" d, 4 Adj & 1 Fix Shelves





TV Armoires/Stands



HALLMARK TV ARMOIRE

This armoire features wrap around doors to give the maximum interior space available. Solid wood construction with your choice of any of our standard wood finishes. Adjustable height shelf inside for DVD and other accessories. Available with or without the doors

ITEM #	DESCRIPTION
SPF7409	ARMOIRE w/DOORS, 43.5"w x 27"d x 74"h (Interior Space - 39"w x 22.5"d x 24-33"h)
SPF7410	ARMOIRE w/NO DOORS, 43.5"w x 27"d x 74"h (Interior Space - 39"w x 22.5"d x 24-33"h)



COURTLAND TV ARMOIRE

This armoire features pocket doors. Solid wood construction with your choice of any of our standard wood finishes. Available with or without the doors and with a flat top or with a crown (model shown)

ITEM #	DESCRIPTION
SPF9209	ARMOIRE w/DOORS, NO CROWN, 39"w x 25"d x 75"h (Interior Space - 33"w x 22"d x 29"h)
SPF9210	ARMOIRE w/NO DOORS/CROWN, 39"w x 25"d x 75"h (Interior Space - 33"w x 22"d x 29"h)
SPF9206	ARMOIRE w/DOORS, CROWN, 39"w x 25"d x 75"h (Interior Space - 33"w x 22"d x 29"h)
SPF9207	ARMOIRE w/NO DOORS, CROWN, 39"w x 25"d x 75"h (Interior Space - 33"w x 22"d x 29"h)



ART DECO ENTERTAINMENT UNITS

Solid wood cabinets will accommodate new LCD and Plasma TV's as well as rear projection units. All cabinets have shelving for DVD and Stereo equipment as well as back cut outs to run wiring. Available in any of our standard wood finishes.

ITEM #	DESCRIPTION
SPFADHD48	TV BASE UNIT (No Drws), 48"w x 20"d x 29"h
SPFADHD84	TV BASE UNIT, 84"w x 20"d x 29"h
SPFADHD84H	TV UNIT w/HUTCH, 84"w x 20"d x 80"h (TV Opening - 44"w)



PHILLIPE ENTERTAINMENT UNITS

Solid wood cabinets will accommodate new LCD and Plasma TV's as well as rear projection units. All cabinets have shelving for DVD and Stereo equipment as well as back cut outs to run wiring. Available in any of our standard wood finishes.

ITEM #	DESCRIPTION
SPFPHD48	TV BASE UNIT (No Drws), 48"w x 20"d x 29"h
SPFPHD74	TV BASE UNIT, 74"w x 20"d x 29"h
SPFPHD74H	TV UNIT w/HUTCH, 74"w x 20"d x 80"h (TV Opening - 44"w)



HUDSON VALLEY ENTERTAINMENT UNITS

Solid wood cabinets will accommodate new LCD and Plasma TV's as well as rear projection units. All cabinets have shelving for DVD and Stereo equipment as well as back cut outs to run wiring. Available in any of our standard wood finishes.

ITEM #	DESCRIPTION
SPFHVHD62	TV BASE UNIT, 62"w x 20"d x 30"h
SPFHVHD74	TV BASE UNIT, 74"w x 20"d x 30"h
SPFHVHD74H	TV UNIT w/HUTCH, 74"w x 20"d x 80"h (TV Opening - 44"w)



Fireplaces

Accessories



NEWPORT



PRESTON



TIMOTHY

ELECTRIC FIREPLACES

Variety of different mantel styles to fit every decor. Each fireplace features patented flame technology for an incredible realistic flame effect, remote control to turn unit on and off and fan forced heater with thermostat control for comfortable heating (can operate with or without heat). Units are cost effective (approx 3 cents/hour) and plug in to a regular electrical outlet.

ITEM #	DESCRIPTION
SPFSEPBW600BGF	NEWPORT, WALNUT FINISH, 60 3/8" w x 18 5/8" d x 53 3/16" h, 1500 Watts, 5120 BTU's
SPFD6787C	PRESTON, CHERRY FINISH, 55" w x 21 1/4" d x 46" h, 1500 Watts, 5120 BTU's
SPFD6787D	PRESTON, OAK FINISH, 55" w x 21 1/4" d x 46" h, 1500 Watts, 5120 BTU's
SPFD8930BW	TIMOTHY, WALNUT FINISH, 54 1/2" w x 17 1/2" d x 47 1/2" h, 1500 Watts, 5120 BTU's
SPFBMP2720	SUSSEX, OAK FINISH, 54 7/8" w x 18 1/8" d x 48 1/8" h, 1500 Watts, 5120 BTU's
SPFBMP272W	SUSSEX, WHITE FINISH, 54 7/8" w x 18 1/8" d x 48 1/8" h, 1500 Watts, 5120 BTU's
SPFD261109W	WINSTON, WHITE FINISH, 52 3/8" w x 14 15/16" d x 42 3/16" h, 1440 Watts, 4915 BTU's
SPFSEP4217FB	TORCHIERE, WALNUT FINISH, 63 3/8" w x 21" d x 49 1/8" h, 1500 Watts, 5120 BTU's



SUSSEX



WINSTON



TORCHIERE



BELVEDERE



CAPRICE



ESSEX

ELECTRIC FIREPLACES

Variety of different mantel styles to fit every decor. Each fireplace features patented flame technology for an incredible realistic flame effect, remote control to turn unit on and off and fan forced heater with thermostat control for comfortable heating (can operate with or without heat). Units are cost effective (approx 3 cents/hour) and plug in to a regular electrical outlet.

ITEM #	DESCRIPTION
SPFGDS30-BW1053	BELVEDERE, WALNUT FINISH, 51 1/2" w x 18" d x 45" h, 1500 Watts, 5120 BTU's
SPFD47430	CAPRICE, OAK FINISH, 48 1/4" w x 17" d x 42" h, 1375 Watts, 4695 BTU's
SPFD4743C	CAPRICE, CHERRY FINISH, 48 1/4" w x 17" d x 42" h, 1375 Watts, 4695 BTU's
SPFD4743W	CAPRICE, WHITE FINISH, 48 1/4" w x 17" d x 42" h, 1375 Watts, 4695 BTU's
SPFD4743E	CAPRICE, ESPRESSO FINISH, 48 1/4" w x 17" d x 42" h, 1375 Watts, 4695 BTU's
SPFGDS30-1086BW	ESSEX, WALNUT FINISH, 54 7/8" w x 18 1/8" d x 48 1/8" h, 1500 Watts, 5120 BTU's
SPFGDS30-1086W	ESSEX, WHITE FINISH, 54 7/8" w x 18 1/8" d x 48 1/8" h, 1500 Watts, 5120 BTU's
SPFGDS30-1086O	ESSEX, OAK FINISH, 54 7/8" w x 18 1/8" d x 48 1/8" h, 1500 Watts, 5120 BTU's
SPFSMP-130-E-ST	KENTON, ESPRESSO FINISH, 49 3/8" w x 17 7/8" d x 43 3/8" h, 1440 Watts, 4915 BTU's
SPFSMP-130-W-ST	KENTON, WALNUT FINISH, 49 3/8" w x 17 7/8" d x 43 3/8" h, 1440 Watts, 4915 BTU's
SPFSMP-130-O-ST	KENTON, OAK FINISH, 49 3/8" w x 17 7/8" d x 43 3/8" h, 1440 Watts, 4915 BTU's
SPFGDS26-1152LR	FEATHERSTON, NATURAL STONE, 61" w x 16" d x 44" h, 1440 Watts, 4915 BTU's
SPFGDS32-1164BW	KENDAL, WALNUT FINISH, 63" w x 20 1/8" d x 49 1/16" h, 1500 Watts, 5120 BTU's
SPFGDS32-1164P	KENDAL, PARCHMENT FINISH, 63" w x 20 1/8" d x 49 1/16" h, 1500 Watts, 5120 BTU's



KENTON



FEATHERSTON



KENDAL

Lighting



From Common area table lamps, Floor lamps, hallway wall sconces, bathroom fixtures to bedside table lamps, there are numerous styles to choose from. Custom fixtures can also be manufactured based on minimum order quantities of 50 to 100 depending on the item style. The models listed below are a small sampling of some of the more popular stock products. There are numerous other styles and colours available. Please contact your Specialty Furniture representative to view a complete catalogue of Tai Pan lighting selections.

FLOOR LAMPS



#SPFC1657



#SPF1384



#SPFC1189



#SPFC1079



TABLE LAMPS



#SPFDKL-81006



#SPF2384



#SPFC2657



#SPF24730B



#SPFC2551



#SPFTA2701



#SPFC2461



#SPFC2079



#SPFC2480M

Accessories

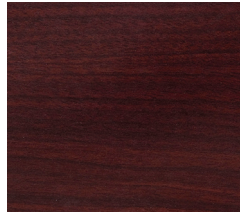
STANDARD* WOOD STAIN CHOICES



Bayou Walnut



Chestnut



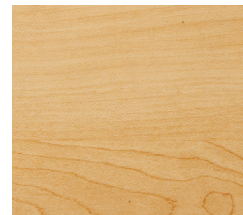
Cordovan Mahogany



Warm Walnut



Millwork Cherry



Natural Maple



Spiced Cherry




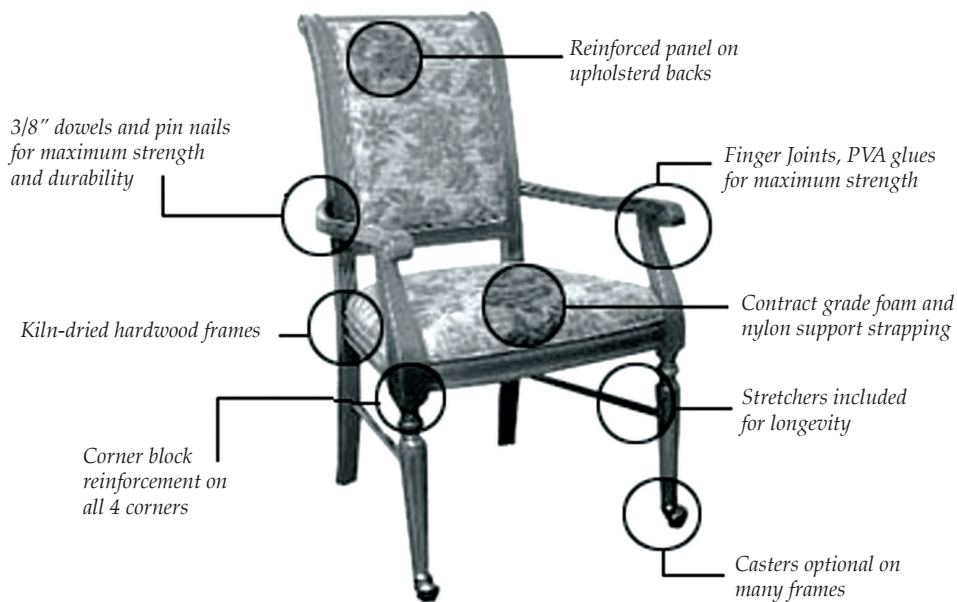
Oak

Note: Actual wood colour may vary from picture shown due to printing limitations. Please request an actual wood sample if an exact sample is needed.

* Custom stain finishes are available for all wood pieces provided a sample is provided to match and also a minimum order level is met. Contact your sales representative for more details.

SEATING SPECIFICATIONS

- 1.0 Frame: All upholstered (non-exposed) frame lumber shall be sound grade dried (7%), mixed hardwood for strength and dimensional stability. All exposed wood shall be milled from kiln dried hardwood, premium grade selected free of visual and structural defects, beechwood or alternate hardwood.
- 2.0 Frame Assembly: All joints are mortise and tenoned, hydraulically assembled, then glued and pinned for extra strength. Corner blocks are fitted to leg and rail and attached with low root screws and glue. All exposed parts are machined round and are sanded to a smooth finish.
- 3.0  Standard Wood Finish Process: All exposed hardwood frames are finish with a catalyzed lacquer using special environmentally friendly, water based process and offers superior resistance to abrasives and chemicals commonly found in a healthcare/hospitality environment. This finish is highly resistant to hot/cold checking and successfully tested to temperature ranges between 120 deg. F to -5 deg. F.
- 4.0 Foam: Upholstery and cushion foam shall be high resiliency (HR) of varying density and flame/fire retardant. All foam, at a minimum, shall meet California Technical Bulletin 117 (TB-117) for flame and fire retardancy. Foam cushioning is selected for comfort and durability.
- 5.0 Inspection: The entire frame and upholstery shall be inspected during the Manufacturing process and again after final assembly. Tailoring shall be neat, trim and applied in a professional manner. All legs will be levelled on our automated levelling machine.



CASEGOOD SPECIFICATIONS

- 1.0 Wood Components: All hardwood shall be kiln dried solid lumber, premium grade selected free of visual and structural defects, species as specified per product.
- 2.0 Wood Veneer Components: Wood species as specified per product. Core to be minimum 45lbs density. All panels are rotary cut and sealed on front, bottom and back panels.
- 3.0 Top Construction: High Pressure laminate, Vinyl Wrapped or Melamine surface as specified per product. Contract grade particle core with minimum density of 45 lbs. Edges to be pvc, vinyl wrapped or high density board as specified per product.
- 4.0 End Panel Construction: Wood veneer or Melamine laminate panel with Contract Grade flake board, 45 lbs. minimum density. Wood or PVC banded on the front edge. PVC banded on the bottom and back edge to prevent moisture absorption.
- 5.0 Drawer Front and Kick Plate Construction: Solid Wood, Vinyl Wrap or Melamine surface as specified per product. Vinyl wrap and Melamine components have contract grade particle core with minimum density of 45 lbs and edges to be pvc, vinyl wrapped or high density board as specified per product.
- 6.0 Drawer Construction: Drawer boxes shall be four-sided, mitre jointed wrap-around boxes. A 1/8" fiberboard bottom will be used. Each box shall be vinyl wrapped and moisture sealed. Bottom in box will be glued, and stapled to drawer box. Glides are side mounted drawer glides with a 75 lb. rating.
- 7.0 Doors: Hinges are European hinges, with varying degrees of swing dependent upon the case.
- 8.0 Back Panels: Back Panels are 1/4" pegboard to allow for proper air circulation within the unit.
- 9.0 Rear Casters and Front Glides: All units to come complete with two rear, twin wheel, nylon casters for ease of mobility and two front adjustable height glides for unit levelling.
- 10.0 Wood Finish Standards: Standard finish shall be comprised of a high solid (over 40%), catalyzed, conversation lacquer offering superior resistance to abrasives and chemicals commonly found in a healthcare/hospitality environment. This material must be highly resistant to hot/cold checking and successfully tested to temperature ranges between 120 deg. F to -5 deg. F.

TABLE SPECIFICATIONS

1. Wood Bases: All hardwood shall be kiln dried solid lumber, premium grade selected free of visual and structural defects, species as specified per product. Bases come standard with adjustable height nylon glides for easy levelling of the table.
2. Metal Bases: All steel bases are 14g to 16g steel with all welds ground smooth and polished to a flawless finish. Steel is coated with a baked on powder epoxy coating in a choice of colours. All cast iron bases have a die cast bottom section with a 16g steel column and finished in a black epoxy coating. Bases come standard with adjustable height nylon glides for easy levelling of the table.
3. Top Construction: High Pressure laminate surface as specified with a contract grade particle core with minimum density of 45 lbs and a phenolic balance sheet on the underside. Edges to be pvc, wood, high density board or poly resin as specified per product.
4. Standard Wood Finish Process: Standard finish shall be comprised of a high solid (over 40%), catalyzed, conversation lacquer offering superior resistance to abrasives and chemicals commonly found in a healthcare/hospitality environment. This material must be highly resistant to hot/cold checking and successfully tested to temperature ranges between 120 deg. F to -5 deg. F

WARRANTY

The original purchaser of Specialty furniture is protected against defective workmanship and components for a period of five years from the date of purchase. This warranty does not cover upholstery coverings or table laminates unless the claim is due to poor workmanship in application. This warranty does not cover transportation costs to and from the factory/repair depot. Specialty Furniture will replace or repair defective furniture at our option free of charge. In no event shall liability under this warranty exceed the original purchase price of furniture. No credit for repairs will be allowed without specific written authorization. This warranty does not apply to furniture damaged by accident, abuse, neglect, or misuse; unauthorized repairs; or freight damage

295 German School Road
Paris, Ontario
N3L 3E1

ph: 1.866.559.5099

fx: 1.866.618.6095

web: www.specialtyfurniture.ca
email: info@specialtyfurniture.ca